

# GTK's role as a mineral exploration promoter

Tero Niiranen

Research Professor, Ore Geology  
Geological Survey of Finland  
Rovaniemi

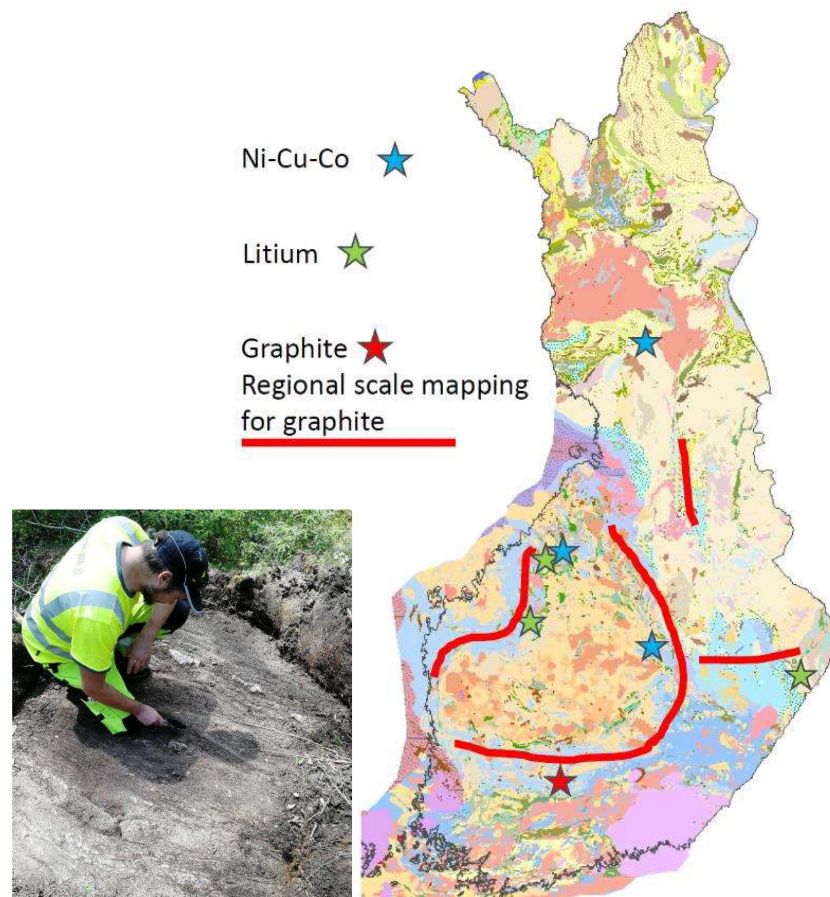
Tukes and GTK briefing 3<sup>rd</sup> and 4<sup>th</sup> May 2023  
Rovaniemi

## GTK provides services and support to all stages of exploration

- Geoinformation and geodata *Katja will talk more on this*
- Mineral potential mapping
- Mineral potential modelling
- Tailored expert services for scientific needs
- Loppi drill core archive
- Research laboratory services *Marja will talk more on this*
- Actively promoting exploration opportunities in different venues (PDAC, Mines & Money, FEM, etc)

## Mineral potential mapping during strategy period 2019-2023

- Focus on battery minerals and related deposits
- Regional scale graphite potential mapping
- Target & Belt scale Li-potential mapping
- Target & Belt scale Ni-Cu-Co mapping
- Geophysical surveys & geochemical sampling programs at different scales

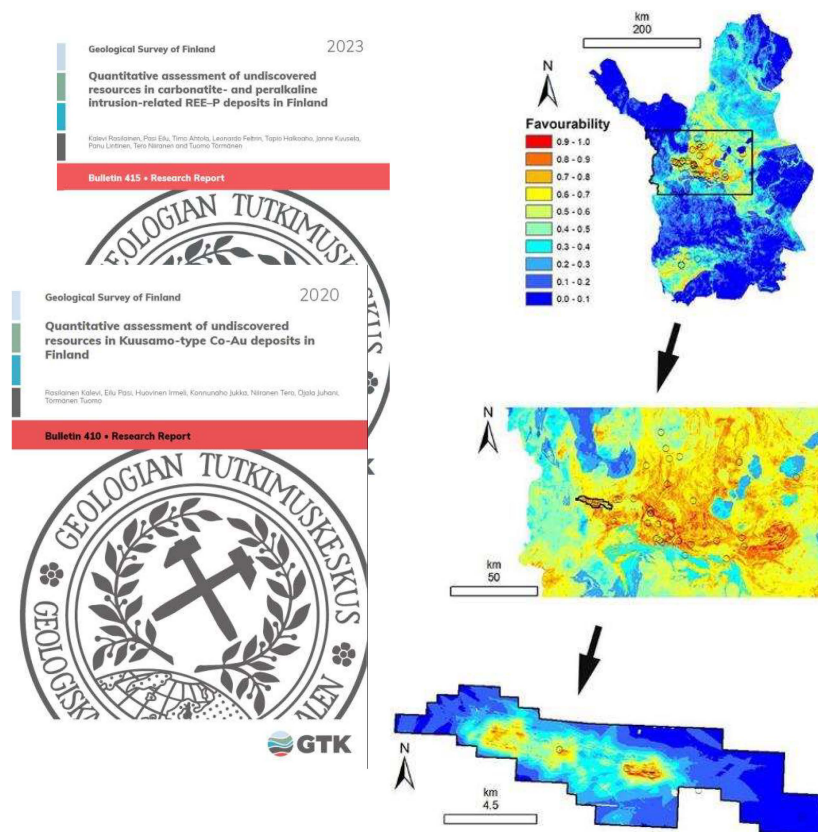


8.5.2023

# Mineral potential modelling during strategy period 2019-2023

- 3D geomodelling in regional to belt to deposit -scales
- Mineral prospectivity modelling from country wide to camp-scales for different deposit types
- Scientific mineral deposit characterisation
- USGS 3-part assessment of undiscovered mineral resources

*GTK provides these also as customer defined scientific expert services*



## Mineral potential research services

- Core sheds and logging tables available at Rovaniemi, Kuopio, Loppi
- Personnel and equipment available for preparation e.g. core splitting
- Petrophysical surveys can be conducted in Rovaniemi, Loppi & Espoo lab

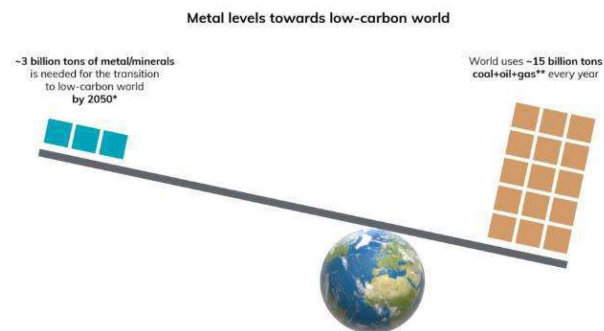


## Mineral potential mapping related services

- Field work assistance or capability building
- Field excursions to customer requested targets or target areas
- Expert scientists are available to improve customers knowledge on regional or deposit scale geology
- Devices for lease on-site with operator; XRF Vanta & Delta, LIBS etc
- Extensive thin section library available for lending

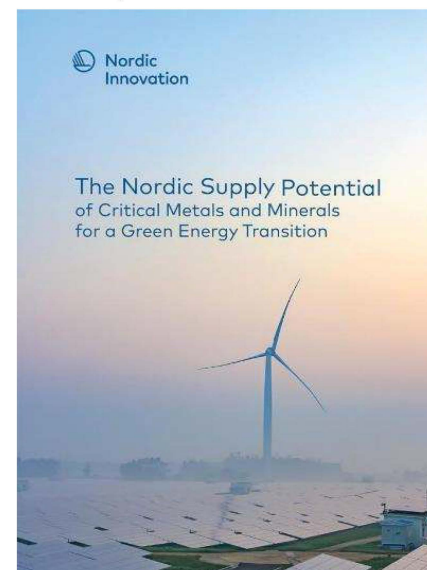
# Mineral intelligence and foresight

- Prognosis and analysis on mineral markets and value chains
- Access to deposit databases in EU and globally
- Partner network to support our customer needs



\* The Beyond 2 Degrees Scenario (B2DS): Aims to limit with a 50% chance global temperature rise to 1.75°C above pre-industrial levels. (Hund, K., La Porta, D., Fabregas, T.P., Laing, T. & Drexhage, J. 2020.)

\*\* gas counted as tonne oil equivalent.



**Tero Niiranen**

Research Professor, Ore Geology

[tero.niiranen@gtk.fi](mailto:tero.niiranen@gtk.fi)

[gtk.fi](http://gtk.fi)

