



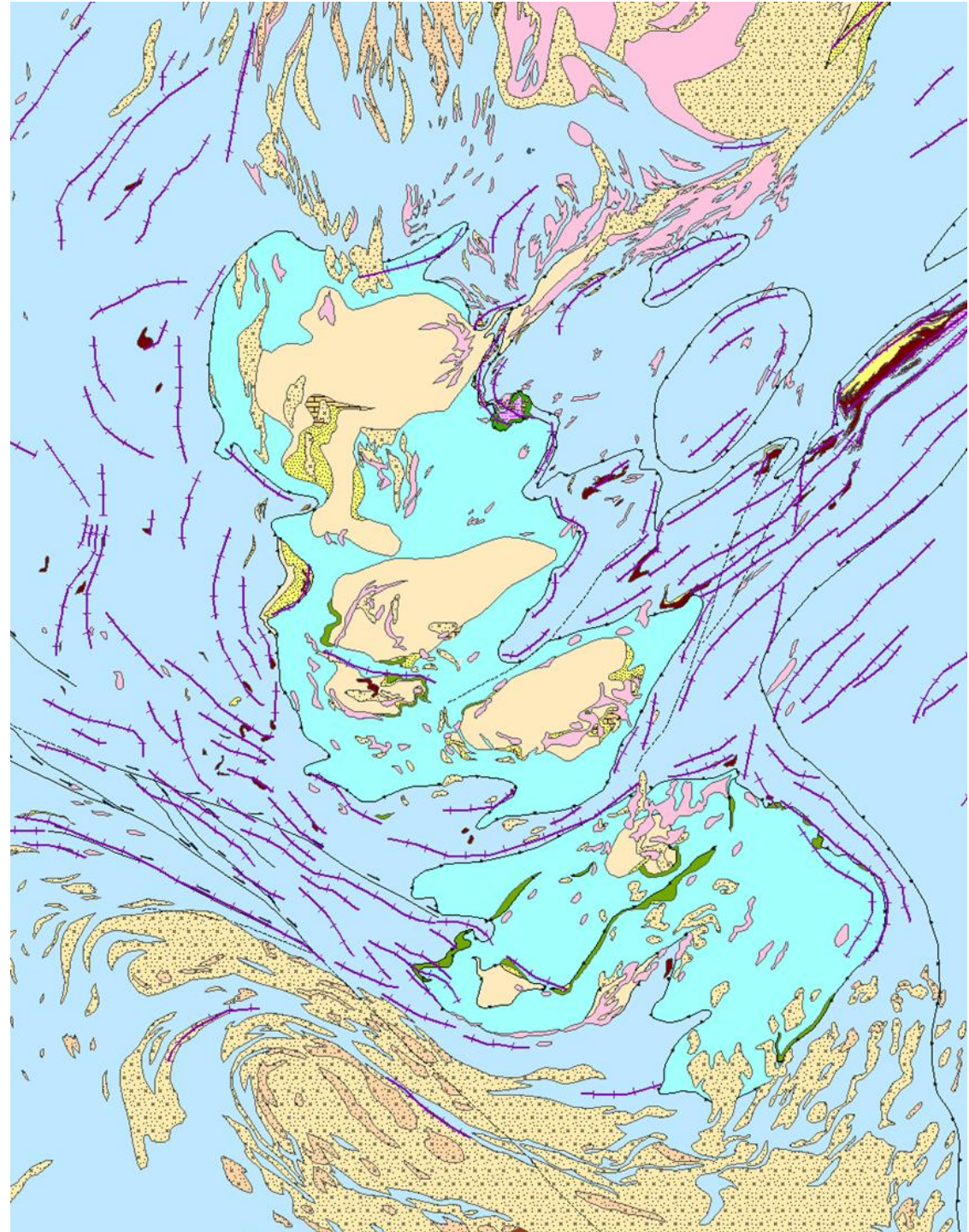
# GTK's new online services

Katja Lalli, Head of Unit, Information Solutions

19.5.2026

# CONTENT

- GTK's online services
  - *Geo.fi*
  - *Hakku*
  - *Map services*
  - *Interface services*
- Geodata and spatial data products
- New licences to use GTK's geodata
- Point of contact



# GTK's Online services

# DATA SETS AND ONLINE SERVICES – GEO.FI | GTK



- Current ▾
- Services ▾
- Research ▾
- GTK ▾
- Contact ▾
- IN ENGLISH
- 

Home > Services > Data Sets and Online Services – geo.fi



## Geo.fi – home to all geological data

This page is a central location for up-to-date geological documents, and here you can browse, download or buy spatial data products, among others. With interface services, you can use GTK's datasets free of charge as background data for your services.

General information about geology and rock sample searching can be found on [The Layman's Sample Practice](#) and [General Information on Geology](#) pages.

- ↓ [Hakku search and download services](#)
- ↓ [Map services](#)
- ↓ [Tools and applications](#)
- ↓ [Interface services](#)
- ↓ [Sample archives and collections](#)
- ↓ [Library services](#)



# Hakku - geological data products

The Hakku service lets you search for and start using a range of spatial data products. The service includes Finnish spatial data, documents and metadata from the 19th century to the present day. The service is continuously expanded with new products.



## Publications, reports, maps and posters

The search service contains information on all publications produced by GTK, archive reports prepared by GTK or submitted to GTK, as well as maps and map sheet explanations. Almost all of the approximately 17,000 products can be downloaded for free through the service. The latest soil and bedrock map data is available as a whole in the Spatial Data Products or can be viewed through our map services.

[More info](#)



## Spatial data products

Spatial data products include datasets made from observation and measurement datasets tied to coordinates, occurrence data and map files. You can see the locations on the map by selecting a product. Some of the spatial data products are free and some are paid. Serial products can be cropped on the map. If the information you are looking for cannot be found pre-productized, you can make an order request.

[More info](#)



## Photos

Geology in various forms in objects, buildings, landscapes, and rock samples. Contains over 12,000 image files starting from the year 1869.

[More info](#)



## Maps

Information about GTK's old hand-drawn geological maps from the years 1850 - 1970. There are over 3100 maps, all of which are downloadable as high-resolution files.

[More info](#)

## More info

- [How to order](#)
- [Order and delivery conditions](#)
- [GTK's map and data services \(geo.fi\)](#)

## GTK Announcements

**WE ARE RENEWING HAKKU SERVICE**

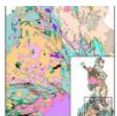
You can now define the area of paid geographic information products yourself. Renewed products: Bedrock observations, Bedrock drilling and GTK Detailed till geochemistry data. More to come in 2026.

[Read more](#)

# HAKKU - GEOLOGICAL DATA PRODUCTS

- File downloading service, that includes
  - *spatial data products*
  - *metadata*
  - *reports, publications and posters*
  - *maps and map drawings*
  - *photos*
- Hakku service contains 122 spatial data products
  - New: 7 self-service products, with area selection (fee-based)
  - 106 available free of charge
  - 42 available with GTK's open licence
- Latest version of Hakku service was launched in December 2025
- [How to Purchase Area-Selectable Spatial Data Products in GTK's Hakku Service](#)
- [Maksullisten paikkatietotuotteiden aluerajaus ja käyttöönotto GTK:n Hakku-palvelussa](#)

### Preview product on map



Bedrock of Finland 1:5 000 000

- Free
- Downloadable through the cart

The 1:5 000 000 dataset on Finnish



Bedrock of Finland scale-free

- Free
- Downloadable through the cart

Bedrock of Finland scale-free includes geological data of Finland. The dataset consists of a little over 100 layers, in which faults, diverse overprinting lines and an origin of the data and a quality evaluation. The unit polygon layer includes period data and stratigraphic geological units (Finstrat) related to the Finnish Bedrock Structural Data.

[Basic Licence and terms of use](#)

[Open metadata](#)

#### Last update

1.6.2022

#### Formats

- esri\_file\_gdb
- MapInfo TAB

#### Coordinate system

- EPSG:3067
- EPSG:3067

#### Price

0,00 €

Price excl. VAT: 0.00 €  
 VAT (24 %): 0.00 €

[Add to cart](#)

#### APIs

- [GTK\\_Kalliopera\\_WMS](#)
- [GTK\\_Kalliopera\\_WFS](#)



Bedrock structural interpretation 1:100 000

- Free
- Downloadable through the cart

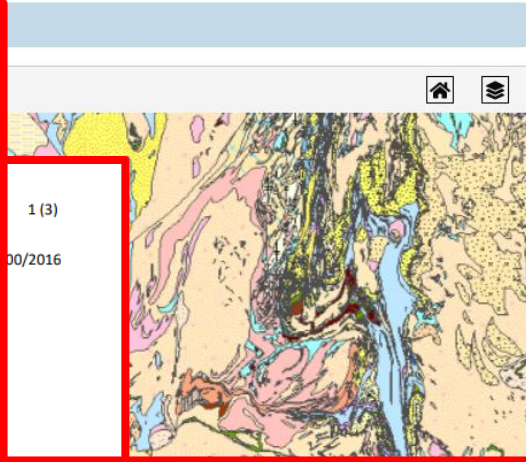
## Added to shopping cart

Bedrock of Finland scale-free

Price 0,00 €

Continue browsing products

View shopping cart



## Shopping cart 1/4

Hakku provides many free products that you can download directly by accepting the terms. For some products we ask you to give your email address before you can download them.

[How to order](#)

1 Shopping cart
 2 Customer info
 3 Shipping
 4 Order confirmation

### Products

Product	Type	Price, (incl. tax)
<b>Spatial data products</b>		
<a href="#">Bedrock of Finland scale-free</a> <a href="#">Show license</a>	Downloadable through the cart	0.00 € <span style="float: right; font-size: 0.8em;"> <a href="#">i</a> <span style="margin-left: 10px;"><a href="#">🗑️</a></span> </span>
<b>Total</b>		<b>0,00 €</b>



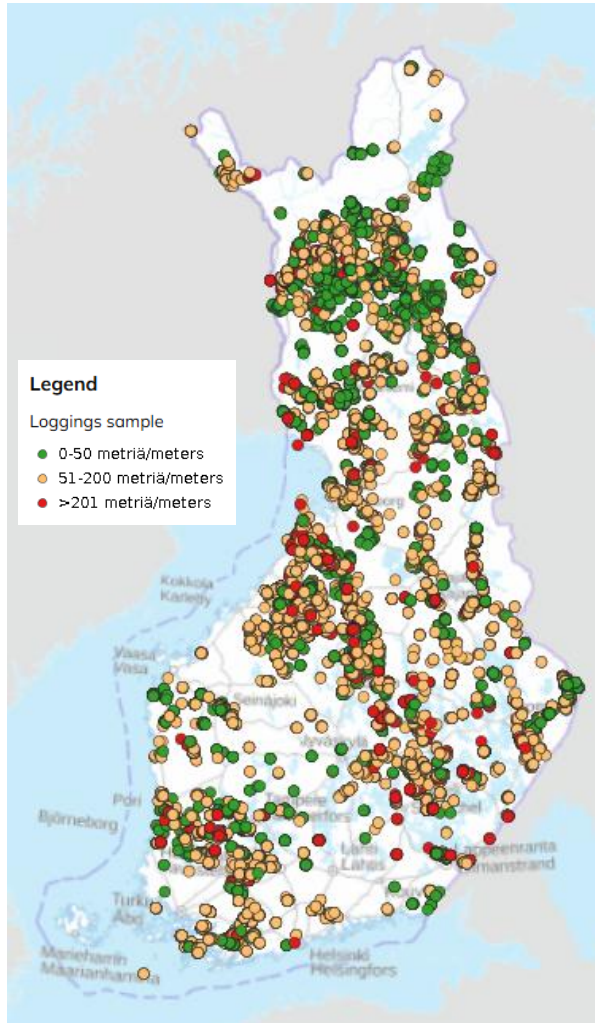
Käyttötarkoitus: Purpose:

Coordinate reference system of the dataset was transformed in March 2013. The transformation from Finnish National Grid Coordinate System (Kartastokoordinaattijärjestelmä, KKJ) Uniform Coordinate Frame to ETRS-TM35FIN projection was done by using the three-dimensional transformation in accordance with the recommendations for the public administration JHS154. Aineisto soveltuu käytettäväksi kallioperätiedon tarkastelussa, kallioperän mineraalisten raaka-ainevarojen kartoituksessa ja tieteellisessä sekä soveltavassa tutkimuksessa. Kartta-aineiston käyttömittakaava on 1:200 000-100 000. Mittakaavattomuudesta johtuen aineistoa voidaan käyttää paikoin (mm. perusmetallikaivosten lähialueet) suuremmassakin mittakaavassa aina 1:20 000 mittakaavaan saakka.

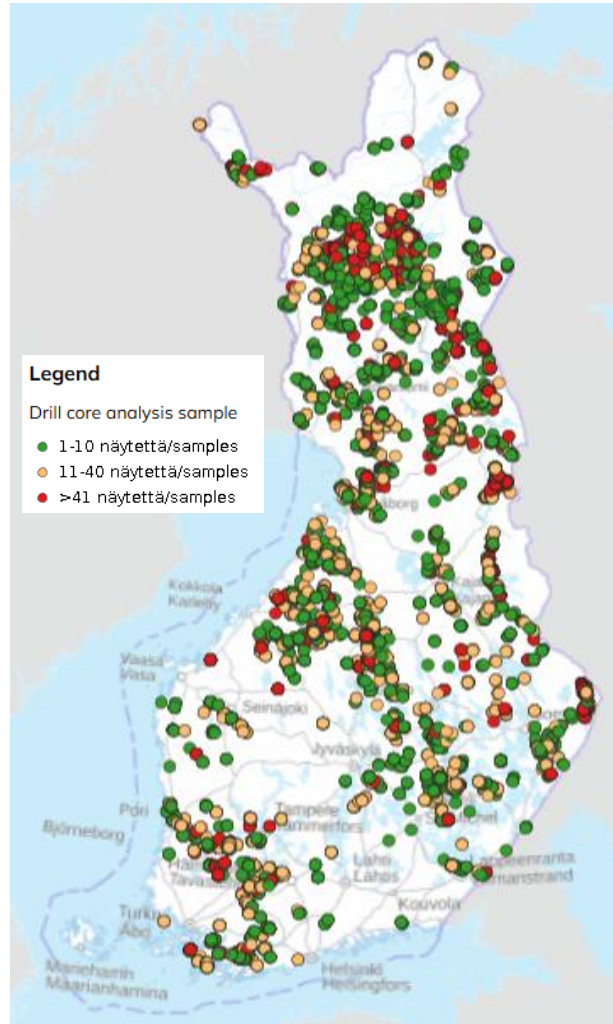
# NEW DATA PRODUCTS BY AREA SELECTION IN HAKKU

## Bedrock drillings:

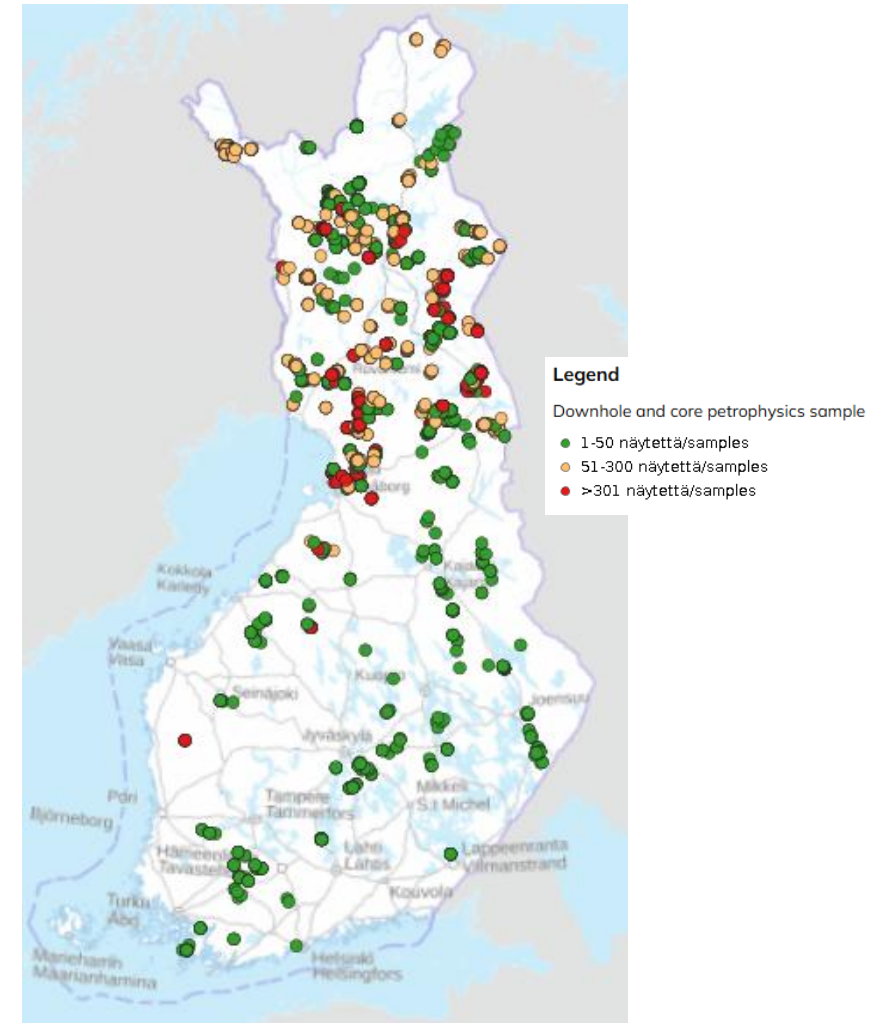
- Drill Core Loggings



- Drill Core analysis



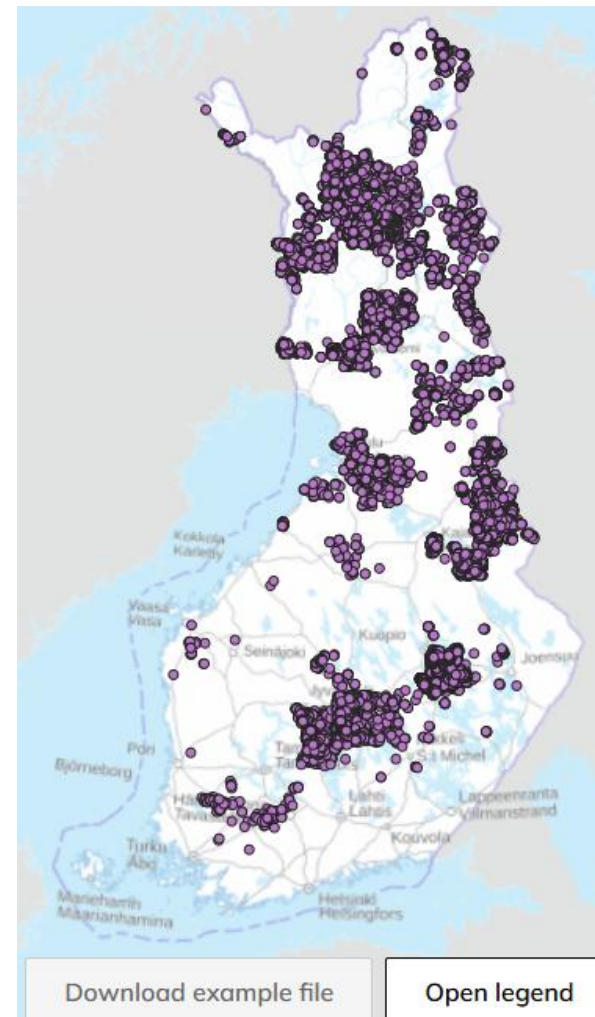
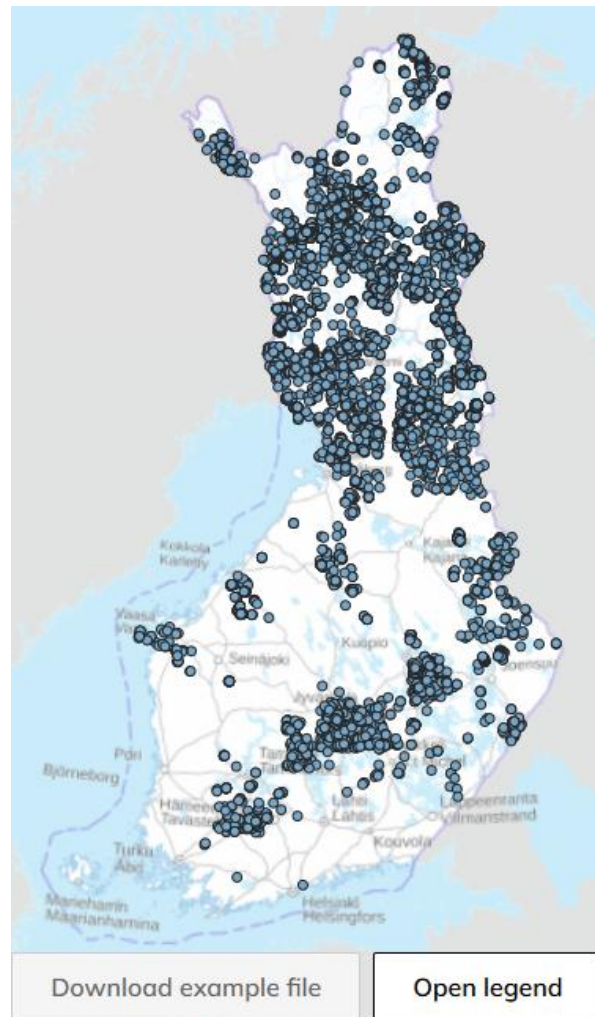
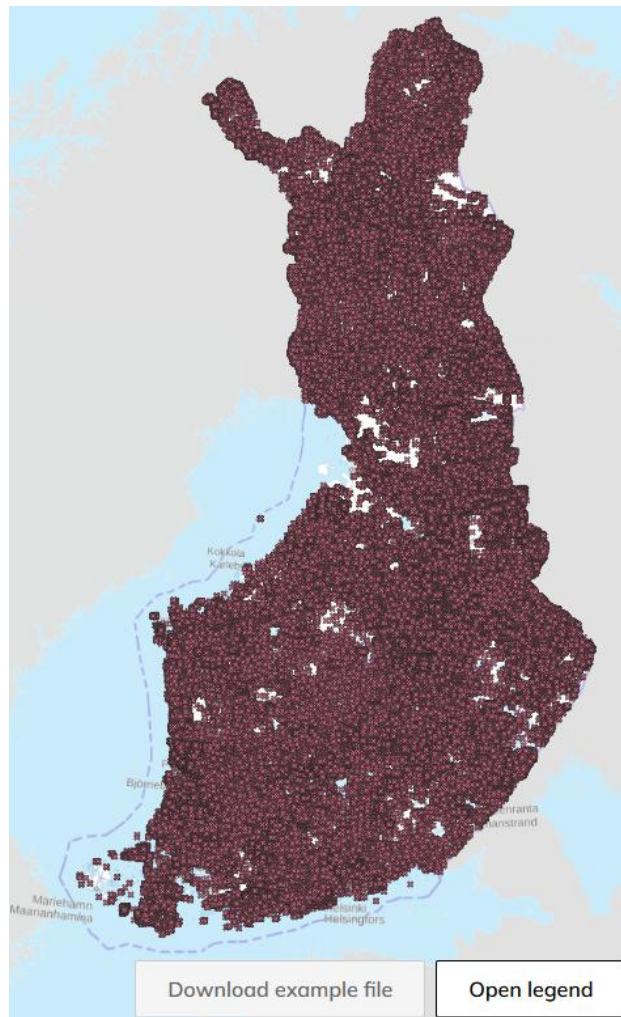
- Petrophysics



# NEW DATA PRODUCTS BY AREA SELECTION IN HAKKU

## Bedrock observations

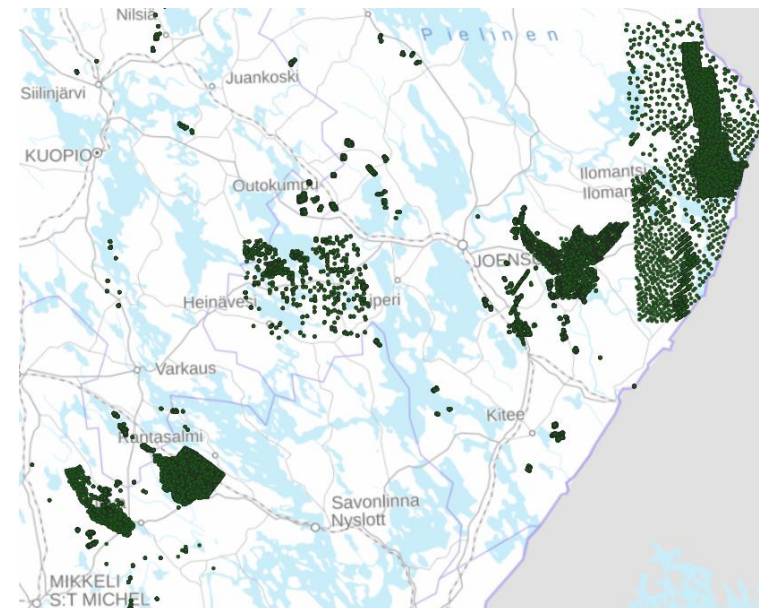
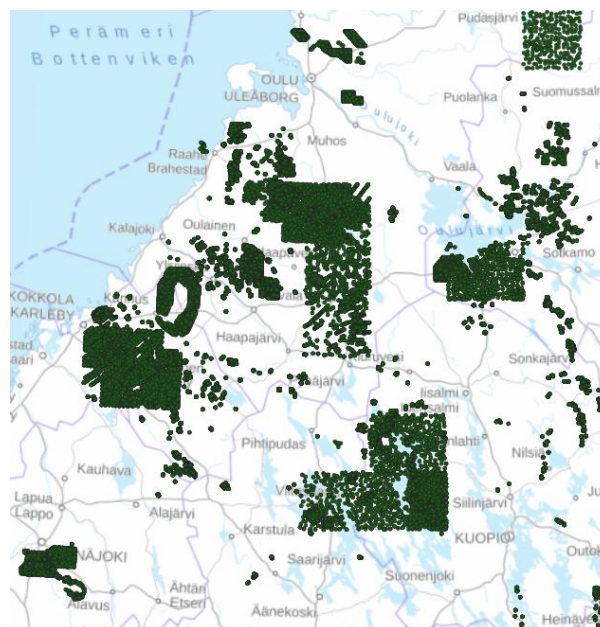
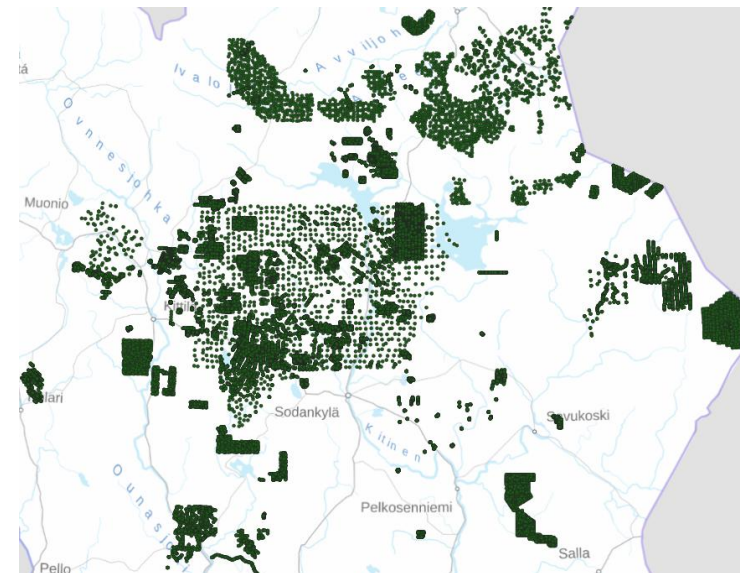
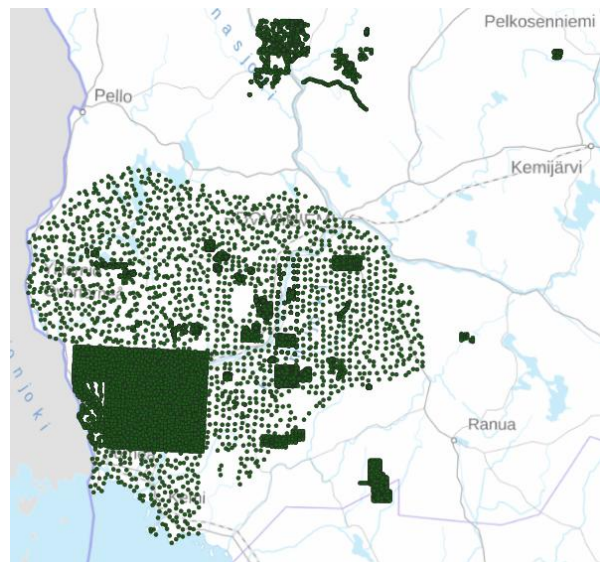
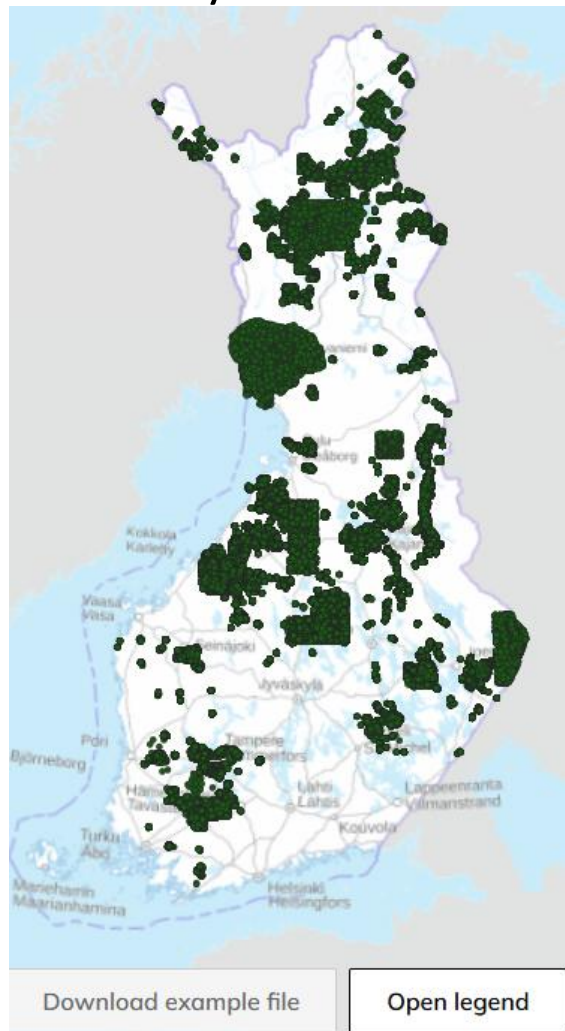
- Observation data
- Analysis data
- Petrophysical data



# NEW DATA PRODUCTS BY AREA SELECTION IN HAKKU

## Detailed till geochemistry, GTK

- Analysis data



22.5.2026

## Latest publications, reports, maps and posters




REPORT  
**Layman's Sample Practice in 2024**  
GTK:n työraportti - GTK Open File Work Report  
[More info](#)



REPORT  
**ERDF SETELIT - Lab to robot-arm scale 3D printing of mine tailing/biopolymer composite materials**  
GTK:n työraportti - GTK Open File Work Report  
[More info](#)



REPORT  
**Keski-Pohjanmaan turvesoiden hiilivarasto ja eri jatkokäyttömuotojen potentiaalit – Turvetuotantoalueet kestävään käyttöön (TURKE) -hankkeen raportti**  
GTK:n tutkimustyöraportti - GTK Open File Research Report  
[More info](#)




REPORT  
**Mineral Prospectivity and Exploration Targeting - MinProXT 2025**  
GTK:n tutkimustyöraportti - GTK Open File Research Report  
[More info](#)


## WHAT'S NEXT

- Next spatial data products available with area selection will be
  - *Regional gravity surveys*
  - *Detailed till geochemistry, OKU*

## Latest spatial data products



24.4.2026  
**Hyperspectral drill core imaging extent**  
Extent for hyperspectral core imaging  
[More info](#)



20.4.2026  
**Expired claim and exploration permits**  
[More info](#)



10.4.2026  
**Bedrock aggregate**  
[More info](#)



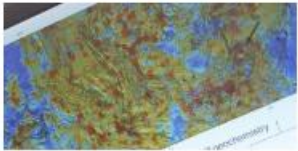
16.3.2026  
**Bedrock weakness zones**  
[More info](#)



## Map services

In map services, you can find a large amount of observation and measurement data in visual format. The datasets have been grouped into themes according to their purpose of use, including mineral deposits, bedrock surveying, and peatland surveys. In map services, you can activate the map layers you want, zoom in or out to any scale, and click objects for more information.

### Metallic minerals, industrial minerals and ore prospecting



Mineral Deposits and Exploration (MDaE)

MDaE is an online map service covering Finland and showing the locations of known ore and industrial mineral deposits.

[Enter map service](#)



Mineral deposits of the Nordic Countries

Mineral deposits of the Nordic Countries map application includes metal and industrial mineral mines, mineral deposits, metallogenic areas, as well as geological and geophysical maps from the Fennoscandian region (Finland, Sweden, Norway), Estonia, and Greenland.

[Enter map service](#)



MPM Online Tool

MPM Online Tool is a web tool for using GTK's spatial data products with the spatial analysis functions of the ArcGIS software family and for assessing possible ore prospecting areas in northern Finland.

[Use tool](#)



Mineral Systems in Finland

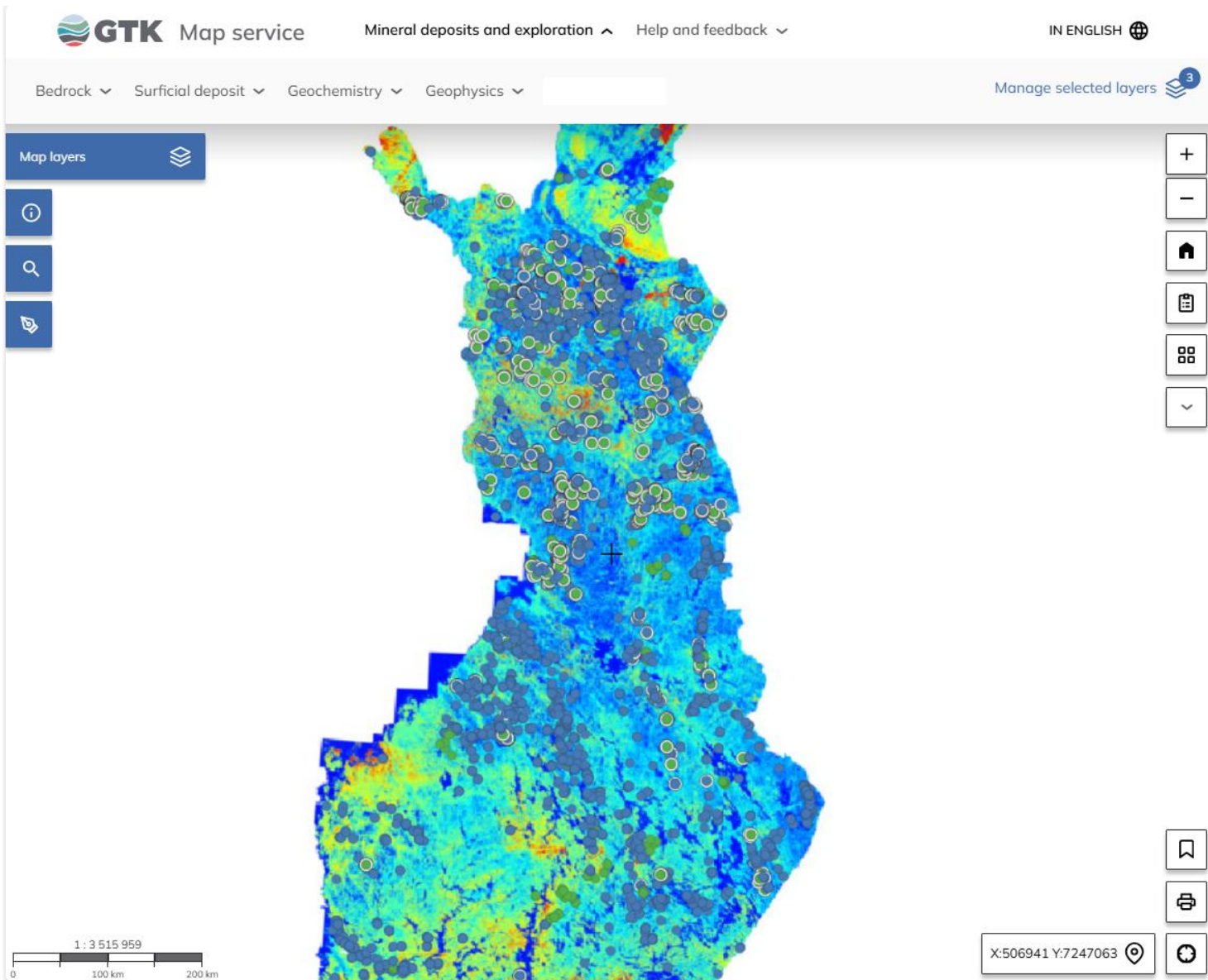
The online service contains systematically organized and maintained data for various types of mineral systems and aims to support identification of new mineral exploration targets in Finland.

[Access service](#)

# MAP SERVICES | GTK

- GTK offers for its customers a selection of map services for different purposes, all maintained on a regular basis
- GTK map services will be renewed during 2026-2027 -> One map window will replace separate map services
- This allows more flexible switching between map and data themes
- New open-source platform and improved overall performance
- New map service will be launched among other map services later this year. Eventually all spatial data products and map themes will be integrated into this one service.

# MAP SERVICES – DRAFT OF RENEWED VERSION



- No registration or login will be required, free of charge
- Easy navigation between different map and data themes
- Improved and user-friendly functions available, for example for searching
- Possibility to store and share bookmarks
- Integration between map service and Hakku will be further developed
- The most popular map theme **Mineral Deposits and Exploration (MDaE)** will be launched first  
<http://gtkdata.gtk.fi/MDaE/index.html>
- Customer feedback and wishes are welcome



# INTERFACE SERVICES | GTK

## Interface services

GTK's interface services are a connection to GTK's server. The server can be accessed with spatial data software, and the software can then be used to select and download data from GTK's server. The interfaces are based on the WMS and WFS standards.

The use of GTK's interface services is free of charge, and users are not asked to create an account. However, users must agree to the terms and conditions of the service. Depending on the map layer, access is either restricted or open and continuous.

### Bedrock



Address for the WMS service:  
[https://gtdata.gtk.fi/arcgis/services/Rajapinnat/GTK\\_Kalliopera\\_WMS/MapServer/WMServer?](https://gtdata.gtk.fi/arcgis/services/Rajapinnat/GTK_Kalliopera_WMS/MapServer/WMServer?)

WMS map layers [↗](#)

Address for the WFS service:  
[https://gtdata.gtk.fi/arcgis/services/Rajapinnat/GTK\\_Kalliopera\\_WFS/MapServer/WFSServer?](https://gtdata.gtk.fi/arcgis/services/Rajapinnat/GTK_Kalliopera_WFS/MapServer/WFSServer?)

WFS map layers [↗](#)

### Rock material resources



Address for the WMS service:  
[https://gtdata.gtk.fi/arcgis/services/Rajapinnat/GTK\\_Kivainesvarannot\\_WMS/MapServer/WMServer?](https://gtdata.gtk.fi/arcgis/services/Rajapinnat/GTK_Kivainesvarannot_WMS/MapServer/WMServer?)

WMS map layers [↗](#)

Address for the WFS service:  
[https://gtdata.gtk.fi/arcgis/services/Rajapinnat/GTK\\_Kivainesvarannot\\_WFS/MapServer/WFSServer?](https://gtdata.gtk.fi/arcgis/services/Rajapinnat/GTK_Kivainesvarannot_WFS/MapServer/WFSServer?)

WFS map layers [↗](#)

### Geophysics



Address for the WMS service:  
[https://gtdata.gtk.fi/ArcGIS/services/Rajapinnat/GTK\\_Geofysiikka\\_WMS/MapServer/WMServer?](https://gtdata.gtk.fi/ArcGIS/services/Rajapinnat/GTK_Geofysiikka_WMS/MapServer/WMServer?)

WMS map layers [↗](#)

### Ground surveys



Address for the WMS service:  
[https://gtdata.gtk.fi/arcgis/services/Rajapinnat/GTK\\_Pohjatutkimukset\\_WMS/MapServer/WMServer?](https://gtdata.gtk.fi/arcgis/services/Rajapinnat/GTK_Pohjatutkimukset_WMS/MapServer/WMServer?)

WMS map layers [↗](#)

Address for the WFS service:  
[https://gtdata.gtk.fi/arcgis/services/Rajapinnat/GTK\\_Pohjatutkimukset\\_WFS/MapServer/WFSServer?](https://gtdata.gtk.fi/arcgis/services/Rajapinnat/GTK_Pohjatutkimukset_WFS/MapServer/WFSServer?)

WFS map layers [↗](#)

- GTK interface services will be renewed during 2025-2027, including
  - *Public interface services*
  - *Customer specific interface service, “Kumppani-API” was launched as part of Hakku service in December 2026*
- Both services will be further developed

# MINERAL PROSPECTIVITY MODELER ONLINE TOOL

**GTK** Mineral Prospectivity Modeler Online Tool [Fuzzy logic](#) | [Data](#) | [Tools](#)

Layers

- MPMOnline
- Mineral deposits and mines
- 
- Geology layers
- Shaded elevation map

MPM-Online Tool

ModelBuilder

Tool uses extent of the map by default. Use rectangle tool to select custom area:

Select a layer for sample points:

NONE

Basemaps

Fuzzy Membership Fuzzy Overlay

1:7.740.457 Y:7804247 X:63738

esri

New MPM Online Tool under development in Business Finland funded AIMEX project

## AIMEX –Artificial Intelligence in Mineral Exploration

Project website: [Aimex](https://aimex.gtk.fi)

Accountable project leader Vesa Nykänen  
vesa.nykanen@gtk.fi

Project manager Hafsa Munia  
hafsa.munia@gtk.fi

# Tervetuloa Finstruct-sovellukseen!

Finstruct on verkkoalusta, jossa jaetaan tietoa Suomen tutkituista kallioperän rakenteista.

Tieto kallioperän rakenteista sekä niihin liittyvistä tieteellisistä viitteistä tallennetaan Geologian tutkimuskeskuksen ylläpitämään tietokantaan. Finstruct tarjoaa tutkijoille, yrityksille, yhteiskunnalle ja harrastajille tietoa kallioperän merkittävistä rakenteista.

Voit aloittaa rakenteiden ja viitteiden tutkimisen yläpuolella olevasta navigointipalkista tai alla olevien korttien avulla.

## Kallioperä-teemainen webinaari tulossa syksyllä 2026, osana GTK:n 140-vuotisjuhlallisuuksia

DEFORMAATIOVYÖ

SIIRROKSET

POIMUT

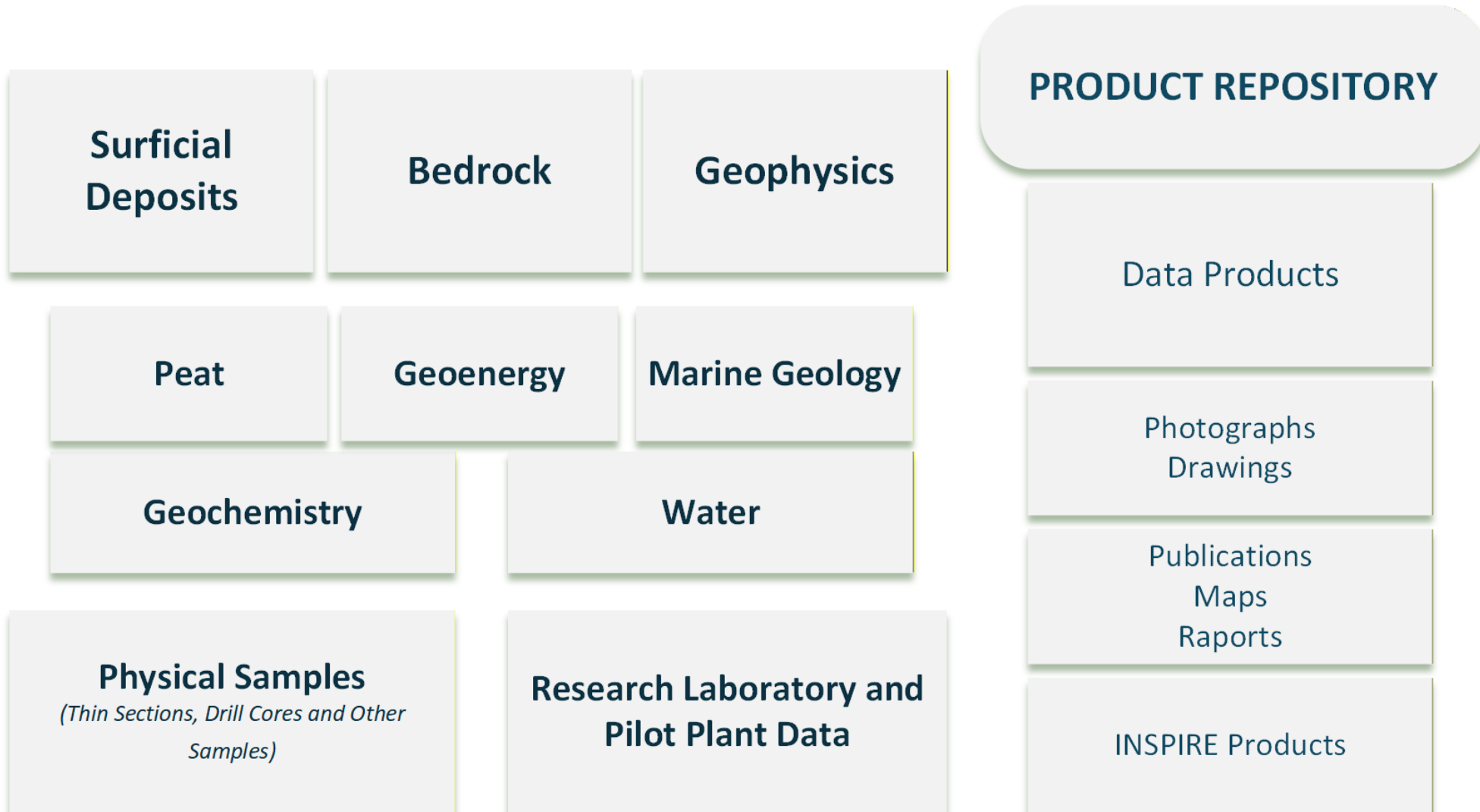
POIMUSYSTEEMIT

KAIKKI RAKENTEET

VIITTEET

# Geodata and spatial data products

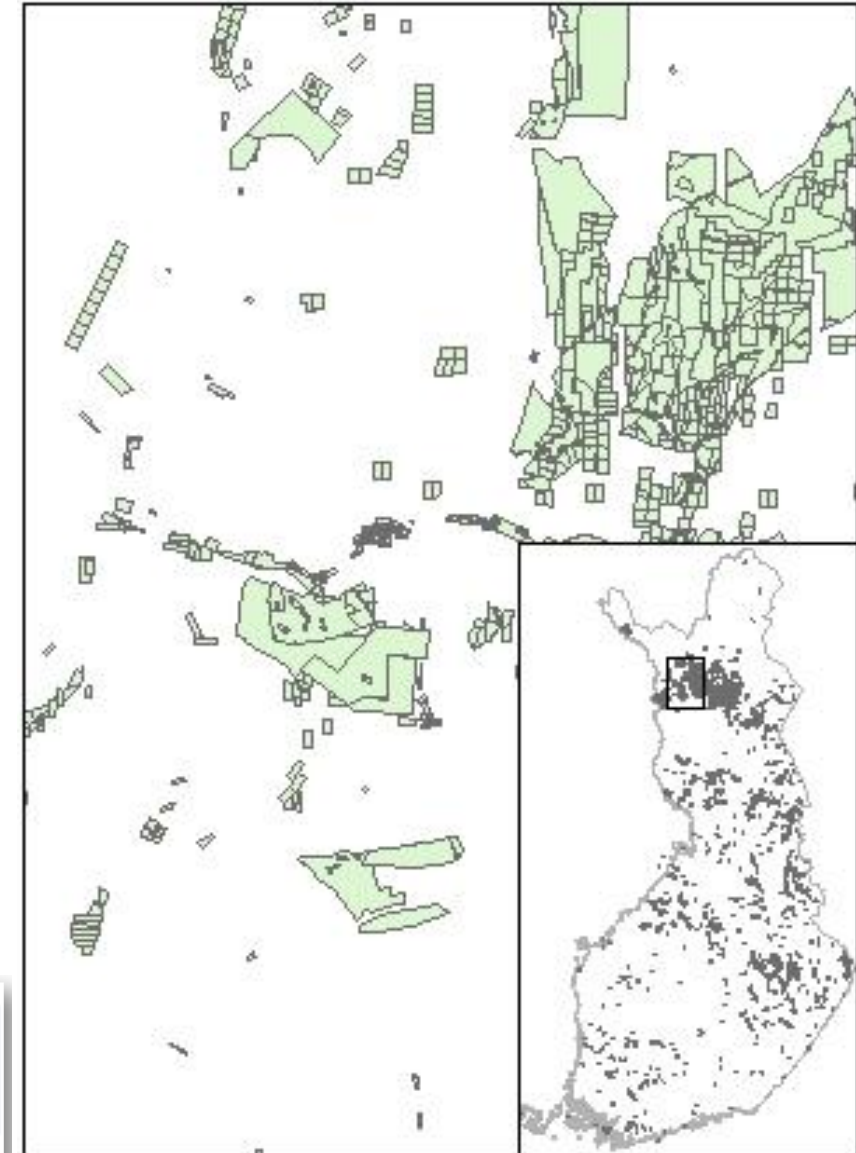
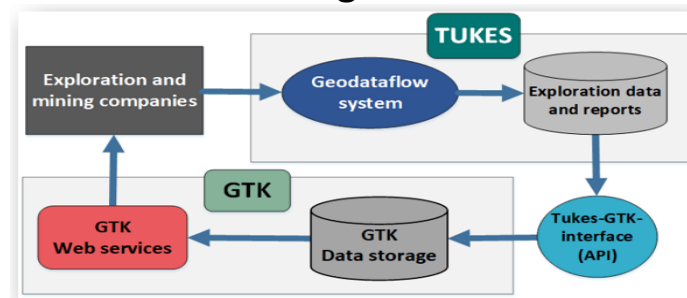
# GEOLOGICAL DATA REPOSITORY



# FEW EXAMPLES FROM FINLAND

## Data flow from mining and exploration companies

- The mining authority of Finland (TUKES – The Finnish Safety and Chemical Agency) collects reports and exploration data from the permit holders
- Reporting covers both annual and relinquishment exploration reports and is required in Mining Law. Guidelines and templates are applied.
- There is a fully digital process and an easy-to-use online portal available for reporting, creating cost-efficiency
- GTK is responsible to manage and share public exploration data
- Data will be available after exploration permit is relinquished
- Data is available as zip files in Hakku downloading service and MDaE web map services (Expired claim and exploration permits)
- Data is widely used, when companies make decisions on their new investments and target areas. The amount of accumulating data is substantial.



# FEW EXAMPLES FROM FINLAND

## National Drill Core Archive

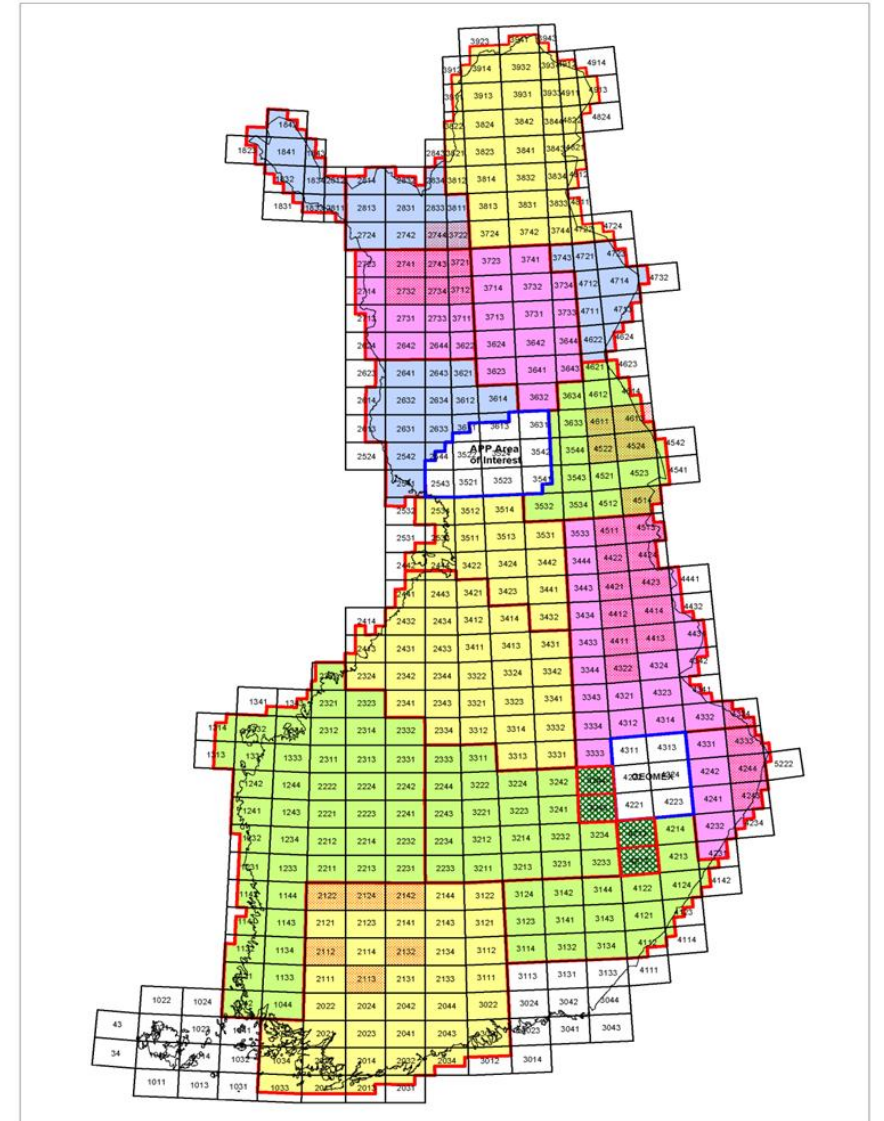
- GTK receives representative drill cores from permit holders according to Mining Act (621/2011)
  - *exploration and mining companies are expected to submit the drill cores in final reporting phase*
- Collections contain more than 3 600 kms of drill cores, from over 35 000 drillings
- Re-sampling is possible according to the [terms and conditions](#)
  - *assays of drill cores by customers is generating new geochemical data*
  - *till geochemistry samples (fractions) are also available*



# FEW EXAMPLES FROM FINLAND

## Outokumpu-GTK data transfer project 2003-2007

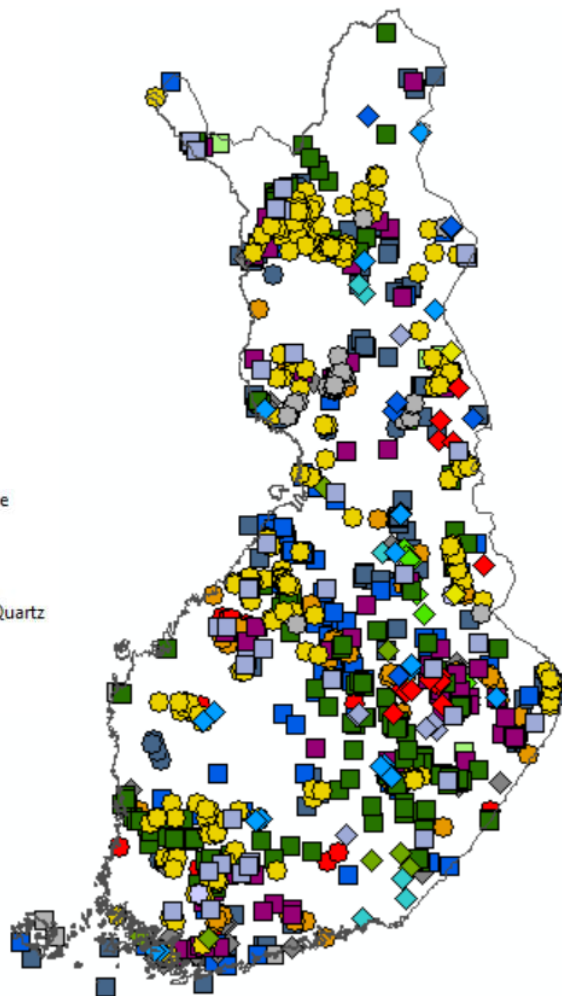
- Outokumpu is a major mining and metal production company operating internationally, originating from Finland
- In the early 2000s, they exited from mineral exploration and released most of their exploration data to GTK.
- This nearly doubled the exploration data and archive materials available in GTK
- Data transfer contained various kind of data and materials, e.g.
  - 472 kms of drill cores from 3100 drillings, 3 truck loads of geochemical samples
  - ground geophysical data of 17.1 million points and app. 35 000 maps
  - bedrock drilling database of 9 528 drill cores (1 400 km)
  - bedrock and boulder observation data 320 000
  - Various kind of geochemical assay data 1 013 000
  - App. 4100 reports and 10 000 digitized maps
  - *This data has been mainly digitized, incorporated into GTK's databases and online services and is available for companies*



# MINERAL DEPOSITS AND MINES

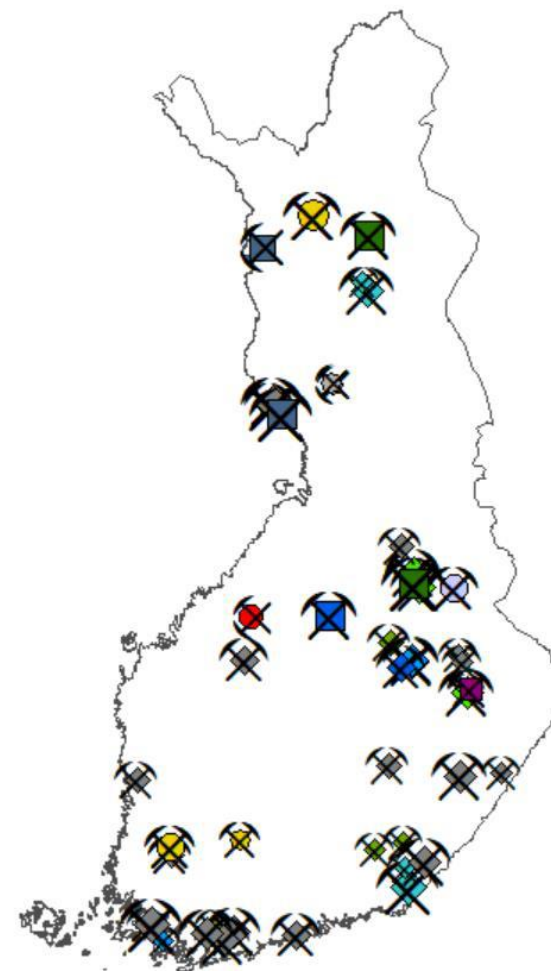
<https://hakku.gtk.fi/en/locations?id=62>

- Mineral deposits
  - All mineral deposits
    - Nickel
    - Copper
    - Zinc
    - Lead
    - Gold
    - Silver
    - Platinum group metal
    - Iron, Chrome
    - Vanadium, Titanium
    - Cobalt
    - REE, Nb, Li, Ta, Be, Sn, Sc
    - Antimony
    - Molybdenum, Tungsten
    - Graphite
    - Uranium, Thorium
    - Calcite, Dolomite, Marble, Wollastonite
    - Apatite
    - Sulphur
    - Talc
    - Kyanite, Sillimanite, Kaolin, Feldspar, Quartz
    - Material for rock wool, Asbestos
    - Diamond
    - Semi-precious gemstones



<https://hakku.gtk.fi/en/locations?id=61>

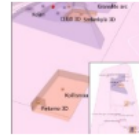
- Mines
  - Metallic mines
    - Active mines
      - Chromium
      - Copper
      - Gold
      - Nickel
      - Silver
      - Zinc
    - Closed mines
    - Historic mines
  - Under development
    - Iron
    - Lithium
    - PGE
    - Titanium/Vanadium
- Industrial mineral mines
  - Active mines
    - Apatite
    - Calcite
    - Dolomite
    - Feldspar/Quartz
    - Material for rock wool
    - Talc
    - Semi-precious gemstones
  - Closed mines
  - Historic mines
  - Under development



# 3D GEOMODELLING

- A regularly updated spatial data product that contains geological 3D models
- The product includes free and purchasable models for downloading.
- The scale of the models varies, as the properties and accuracy of their datasets depend on the purpose of the datasets collected and the research and measurement methods used.

## Product



### 3D Geomodelling

The product includes downloadable free and purchasable models. You can explore detailed information about the models using our free 3D Geomodelling extent product.

- Fee-based
- Basic Licence
- Product selected from the map

[Close details](#)

GTK has been making geological 3D models in various projects since 2000. The multidimensional spatial data collected by GTK from bedrock, superficial deposit and groundwater (e.g. geology, mineralogy, geochemistry and geophysics) is used for 3D modelling, which makes it possible to produce numerical estimates based on the 3D geometry of datasets, for example, on the water and mineral resources of our country and to visualize the properties of geological deposits. 3D models and visualizations are mostly based on the geoscientific interpretation of the formation stages of the modeling object. The data to be downloaded includes the geometries produced when the models are created, which can be used to spatially perceive different geological units or structures on the ground. The scale of the models varies, as the properties and accuracy of their datasets depend on the purpose of the datasets collected and the research and measurement methods used.

[Read metadata](#)

[Copy link](#)

**Last update**  
25.11.2025

**Formats**  
Esri File Geodatabase

**Coordinate system**  
EPSG:3067

**Themes**

[Geophysics](#) [Bedrock](#) [Superficial deposits](#)  
[Land use](#)

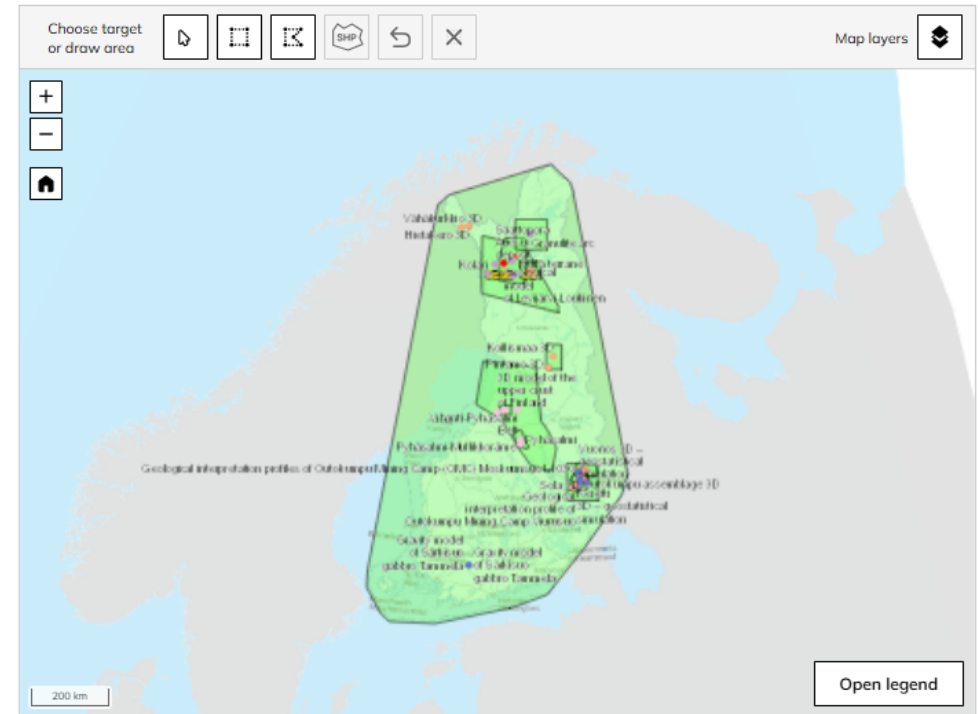
[Basic Licence and terms of use](#)

**i** The total price of this product will be calculated based on the features you select. Use the map drawing tools to make your selection.

**Total price (incl. VAT)** **0,00 €**  
0 pcs

Price excl. VAT: 0,00 €  
VAT (25,50 %): 0,00 €

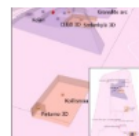
[Add to cart](#)



**i** The map is for previewing the product. See map services for more information.

You can explore the content in more detail in the map services

[Mineral deposits and exploration](#)



### 3D Geomodelling extent

- Free
- Basic Licence

[Open details](#)

# HYPERSPECTRAL DRILL CORE DATA

- The free downloadable product includes point data from hyperspectrally scanned drill cores in both Esri file geodatabase and geopackage formats (zip).
- It also contains example files representing different processing levels (levels 1, 2, 3, and 4) as well as the image files of the drill core SOKLI-267.



## Hyperspectral drill core imaging extent

Extent for hyperspectral core imaging

Hyperspectral image data are collected non-invasively from air-dry samples at room temperature. The data are acquired using cameras that record the different wavelengths of the electromagnetic spectrum in tens to hundreds of bands. Hyperspectral image data can provide information about the mineralogical and mineral chemical composition of rocks. The free downloadable product includes point data from hyperspectrally scanned drill cores in both Esri file geodatabase and geopackage formats (zip). It also contains example files representing different processing levels (levels 1, 2, 3, and 4) as well as the image files of the drill core SOKLI-267. More information about the processing levels can be found in the product metadata. For inquiries about fee-based datasets, please contact [geodata@gtk.fi](mailto:geodata@gtk.fi).

[Read metadata](#)

[Copy link](#)

Last update	Formats	Coordinate system
24.4.2026	Muu/Other	EPSG:3067
	Esri File Geodatabase	EPSG:3067
	GeoPackage	EPSG:3067

Themes

- Geochemistry
- Geophysics
- Bedrock
- Energy
- Raw materials

[Basic Licence and terms of use](#)

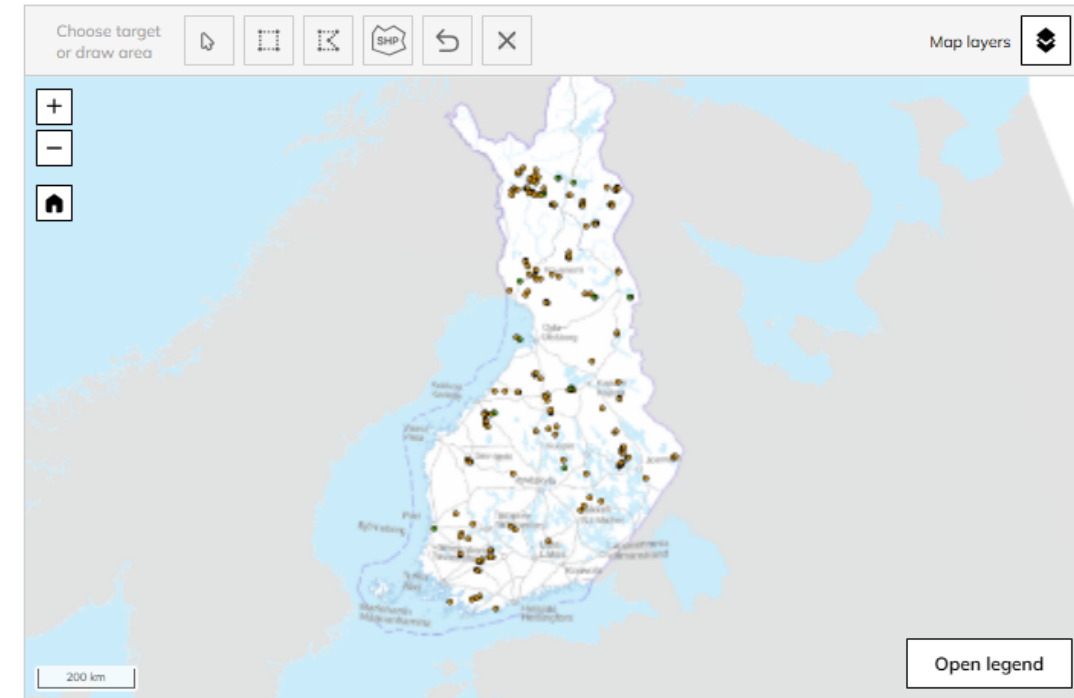
Total price

0,00 €

[Add to cart](#)

- Free
- Basic Licence








[Close details](#)

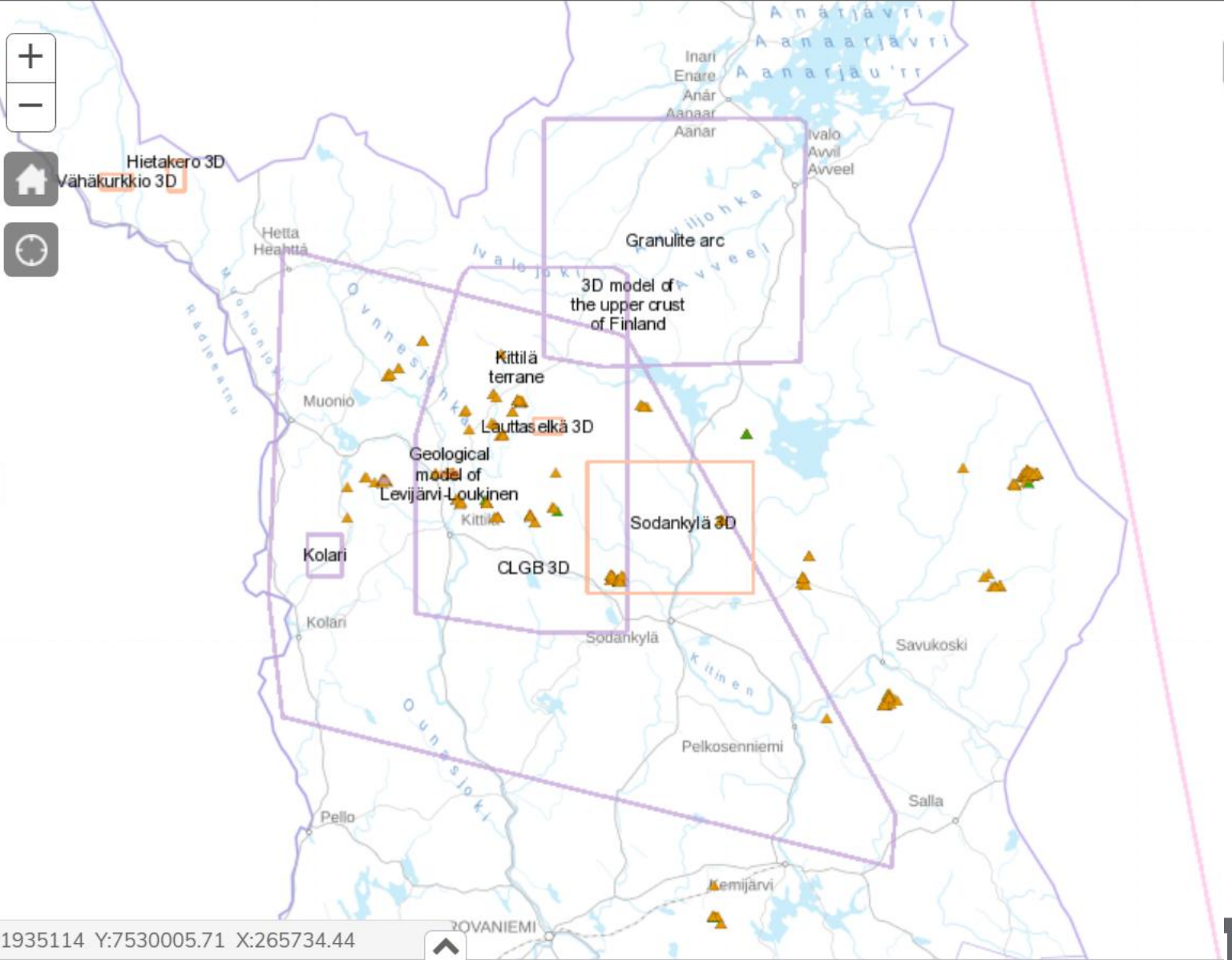


The map is for previewing the product. See map services for more information.

You can explore the content in more detail in the map services

[Mineral deposits and exploration](#)

- Exploration layers
- 3D Geomodelling extent 
- Bedrock,
- Bedrock, Geological
- Bedrock, Lithological
- Bedrock, Resource model
- Bedrock, Structural geological
- Bedrock, Geophysical
- Permissive areas for mineral deposits 
- Bedrock observations 
- Bedrock drilling
- Bedrock drilling 
- Bedrock drilling photo
- Hyperspectral drill core image data 
- 2 - automatically created mineral classification results
- 4 - checked mineral classification results
- National drill core archive 
- Ore boulders and showings
- Mining Registry
- Metallogenic areas 
- Radiometric ages



**New licences to use GTK's geodata**

# RENEWED LICENCES

Geological Survey of Finland (GTK) provides rights to use the data and products under its ownership. GTK-granted licences include:

- Basic License
- Open License (compatible with CC Attribution 4.0 International)
- Licence for academic thesis
- Data Material cooperation licence

The GTK Data Policy and GTK licenses are available on [Data Policy -page](#).

Geologian tutkimuskeskus GTK myöntää omistamilleen tietoaaineistoille ja tuotteille käyttöoikeuksia. GTK:n myöntämät lisenssit ovat:

- Peruslisenssi
- Avoin lisenssi (CC 4.0 Nimeä Kansainvälinen -yhteensopiva)
- Opinnäytetyölisenssi
- Aineistoyhteistyölisenssi

GTK:n Aineistopolitiikka ja GTK:n lisenssit ovat kuvattuina sivulla [Aineistopolitiikka](#).

# GEODATA CUSTOMER SERVICES

- First fee-based self-service data products available:  
<https://www.gtk.fi/en/current/gtk-search-and-download-service-hakku-has-been-updated/>  
[\*GTK:n haku- ja latauspalvelu Hakku uudistui – paikkatietotuotteiden aluerajauksia voi nyt tehdä itse | GTK\*](#)
- Data product catalogue and price list, incl. offer request form:  
[\*The price list and terms of use for digital data products | GTK\*](#)  
[\*Paikkatietoaineistojen ja -tuotteiden käyttöoikeudet ja hinnasto | GTK\*](#)
- Licensing options for geodata:  
Basic (restricted) licence:  
[\*GTK basic licence for data and products | GTK\*](#)  
[\*GTK:n peruslisenssi tuotteille ja aineistoille | GTK\*](#)  
Open licence:  
[\*GTK open licence for data and products | GTK\*](#)  
[\*GTK:n avoin lisenssi aineistoille ja tuotteille | GTK\*](#)  
Licence for academic thesis:  
[\*GTK:n opinnäytetyölisenssi tuotteille ja aineistoille | GTK\*](#)

**Point of contact**

# CONTACT US

- Our geodata customer service is happy to help you in all questions and feedback regarding data sets or online services at:
  - [geodata@gtk.fi](mailto:geodata@gtk.fi)
- GTK's social media channels, new products are highlighted here
  - [linkedin.com/company/geological-survey-of-finland/](https://www.linkedin.com/company/geological-survey-of-finland/)
  - [linkedin.com/in/maija-pennanen-28181520](https://www.linkedin.com/in/maija-pennanen-28181520)
- If you are interested to know more about GTK's geodata management and analysis services, contact Head of Unit, Information Solutions:
  - [katja.lalli@gtk.fi](mailto:katja.lalli@gtk.fi)
- Please, provide feedback for development of online services and geodata
  - [Contact Us | GTK](#); [Yhteydenotto | GTK](#)