



Geological Survey of Sweden and the Mineral Resources Sector

Kaj Lax 2026-05-20

SGU in brief

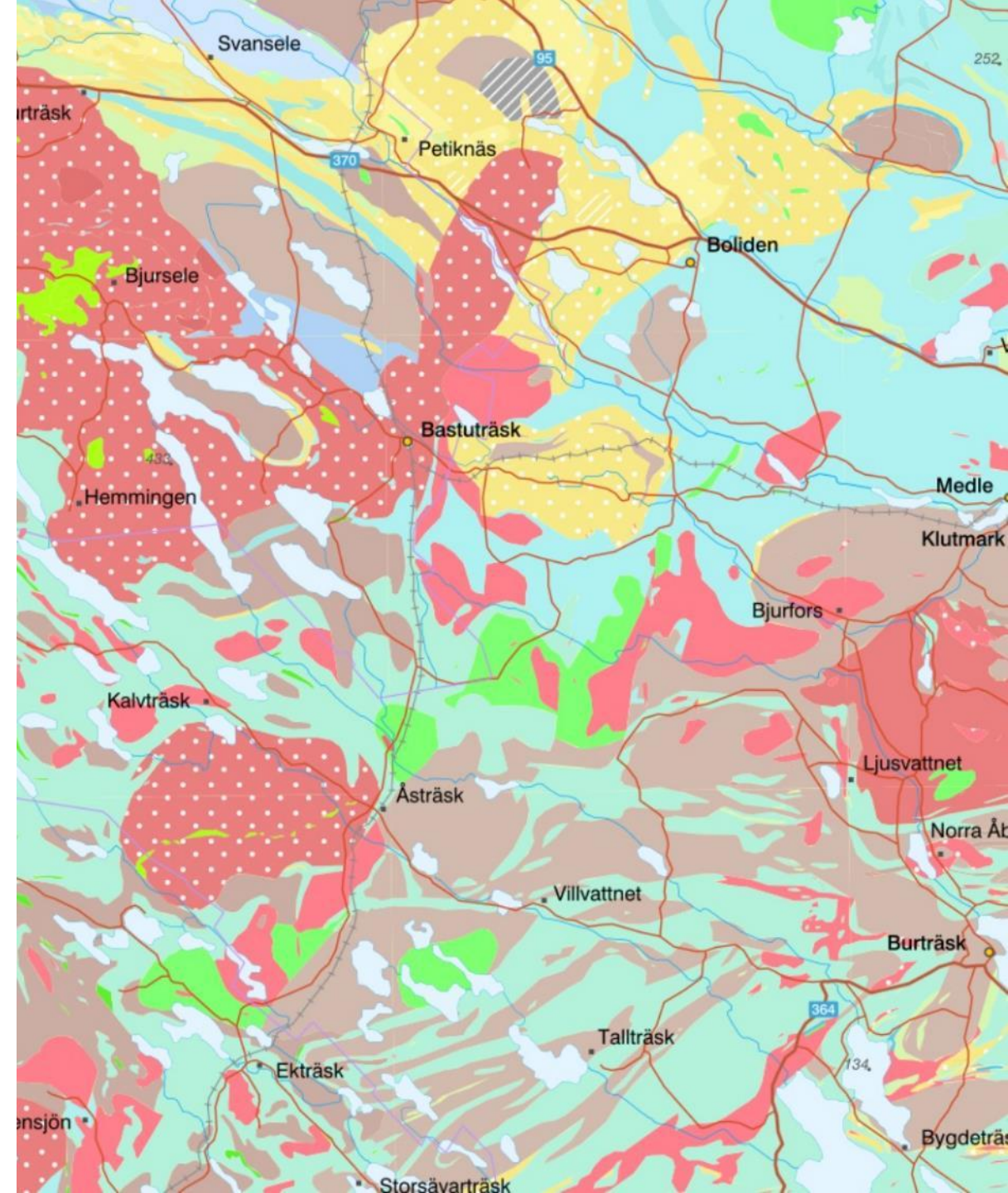
- SGU is an agency under the Ministry of Climate and Enterprise.
- Established 1858
- Approximately 340 employees.
- Offices in Uppsala (HQ), Gothenburg, Luleå, Malå, and Lund
- Since February 1, 2025, our Director General is Anette Madsen.



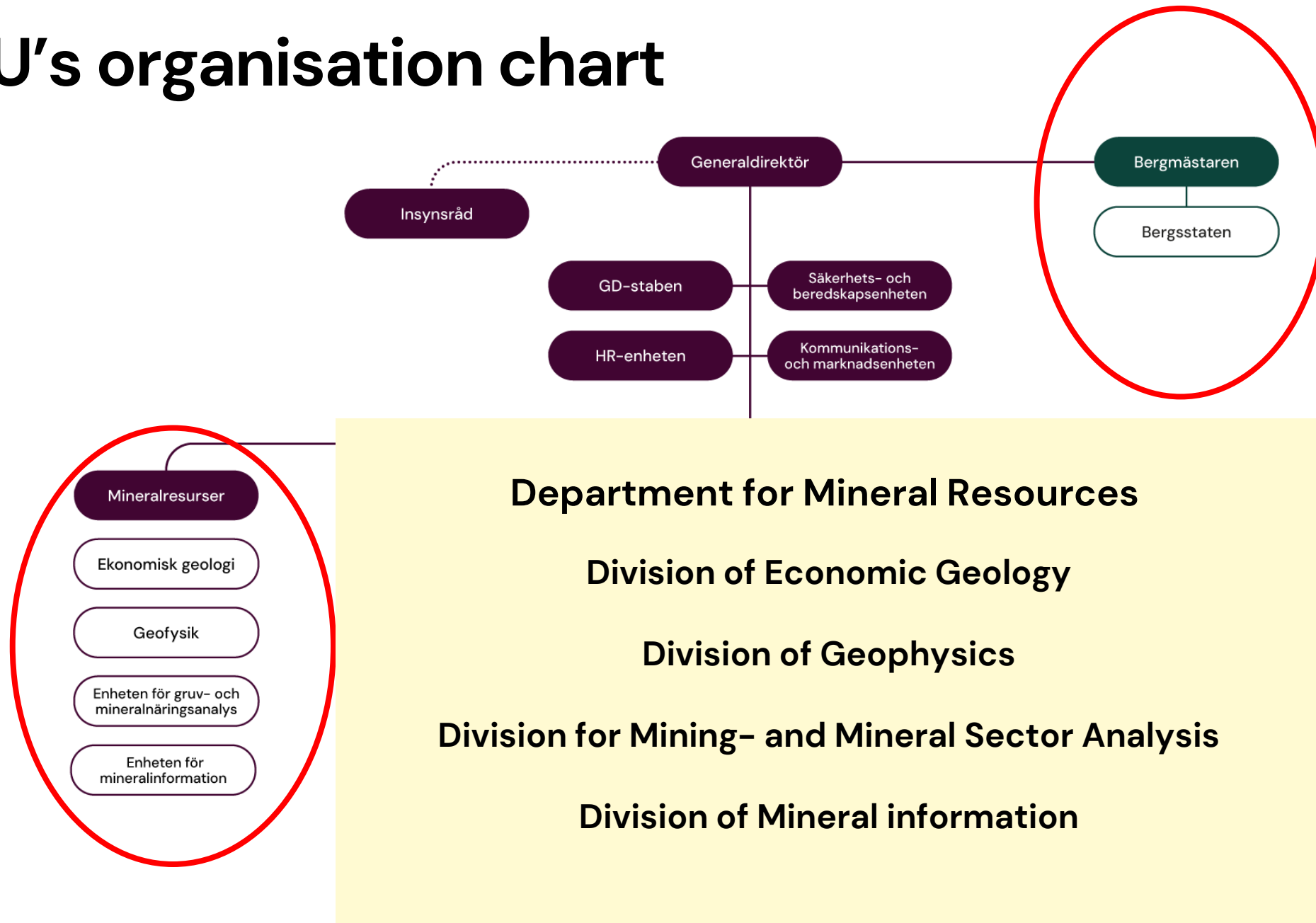
Access to free data

On June 9, 2024, SGU made all its previously paid products completely free.

We were the first government agency in Sweden to do this.



SGU's organisation chart



SGU and the mineral resources sector

Better conditions for the mineral industry

§ 2 SGU shall provide geological information for society's needs in the short and long term. For this purpose, the agency shall

1. conduct a needs-driven collection of basic geological information, and
2. manage and develop collected information in order to make it accessible and easy to use. Ordinance (2012:805).

Förordning (2008:1233) med instruktion för Sveriges geologiska undersökning

SFS nr: 2008:1233

Departement/myndighet: Klimat- och näringslivsdepartementet RSN

Utfärdad: 2008-12-04

Ändrad: t.o.m. SFS 2025:738

Ändringsregister: [SFSR \(Regeringskansliet\)](#)

Källa: [Fulltext \(Regeringskansliet\)](#)

Better conditions for the mineral industry

§ 3 SGU shall work to create good conditions for the sustainable use of the country's mineral resources and to promote sustainable growth and entrepreneurship within the sector. The task includes, among other things, marketing Sweden as a country for exploration and providing guidance and exploration information to companies planning to explore in Sweden.

Förordning (2008:1233) med instruktion för Sveriges geologiska undersökning

SFS nr: 2008:1233

Departement/myndighet: Klimat- och näringslivsdepartementet RSN

Utfärdad: 2008-12-04

Ändrad: t.o.m. SFS 2025:738

Ändringsregister: [SFSR \(Regeringskansliet\)](#)

Källa: [Fulltext \(Regeringskansliet\)](#)

Better conditions for the mineral industry

1 a § SGU is a preparedness authority according to the Ordinance (2022:524) on the preparedness of government agencies. Ordinance (2025:738).

Förordning (2008:1233) med instruktion för Sveriges geologiska undersökning

SFS nr: 2008:1233

Departement/myndighet: Klimat- och näringslivsdepartementet RSN

Utfärdad: 2008-12-04

Ändrad: t.o.m. SFS 2025:738

Ändringsregister: [SFSR \(Regeringskansliet\)](#)

Källa: [Fulltext \(Regeringskansliet\)](#)

SGU and Mineral resources

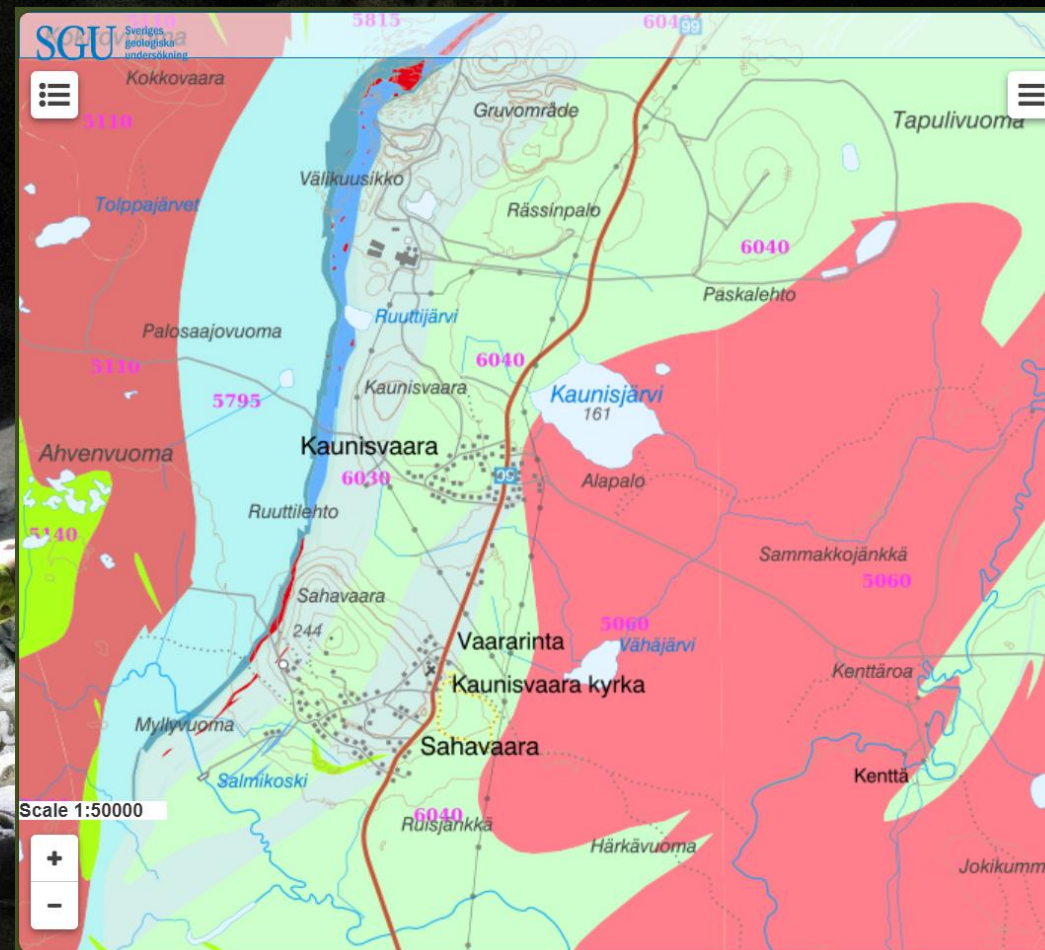
Our main tasks



SGU and Mineral resources

Produce and provide information **for** and about exploration and mining

Bedrock geology, geophysics, till geochemistry



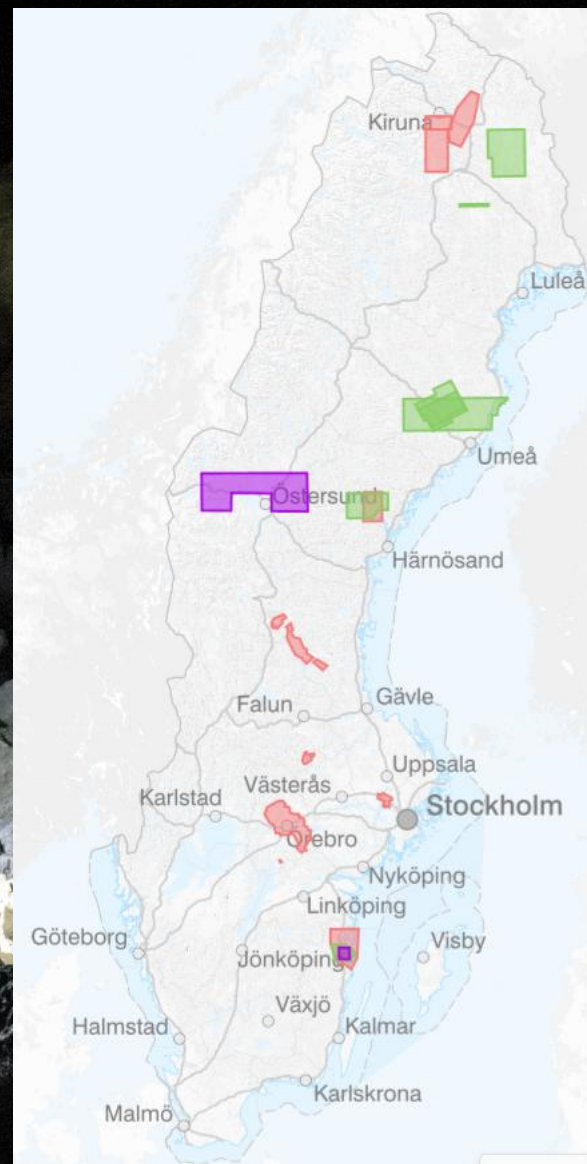
SGU and Mineral resources

Produce and provide information **for** and about exploration and mining

Mapping still ongoing:

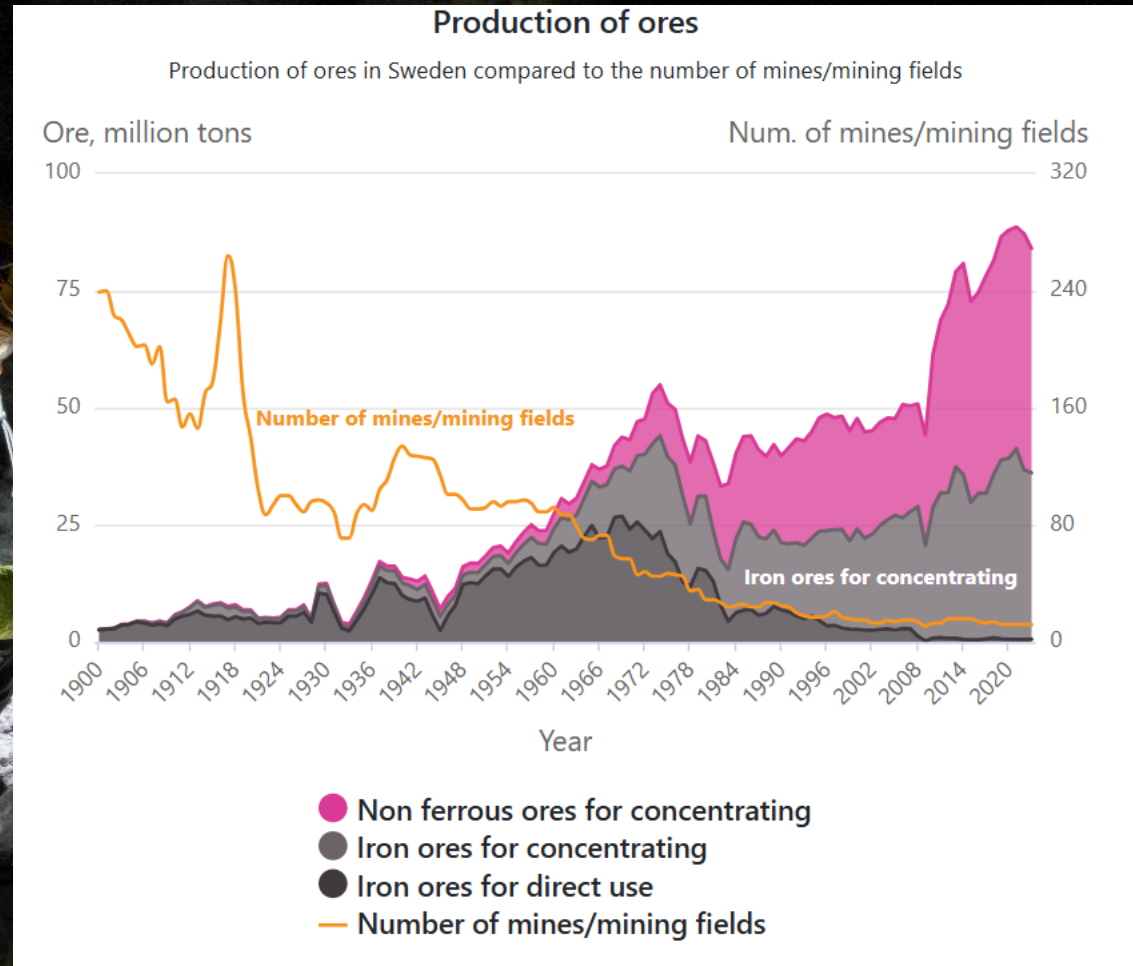
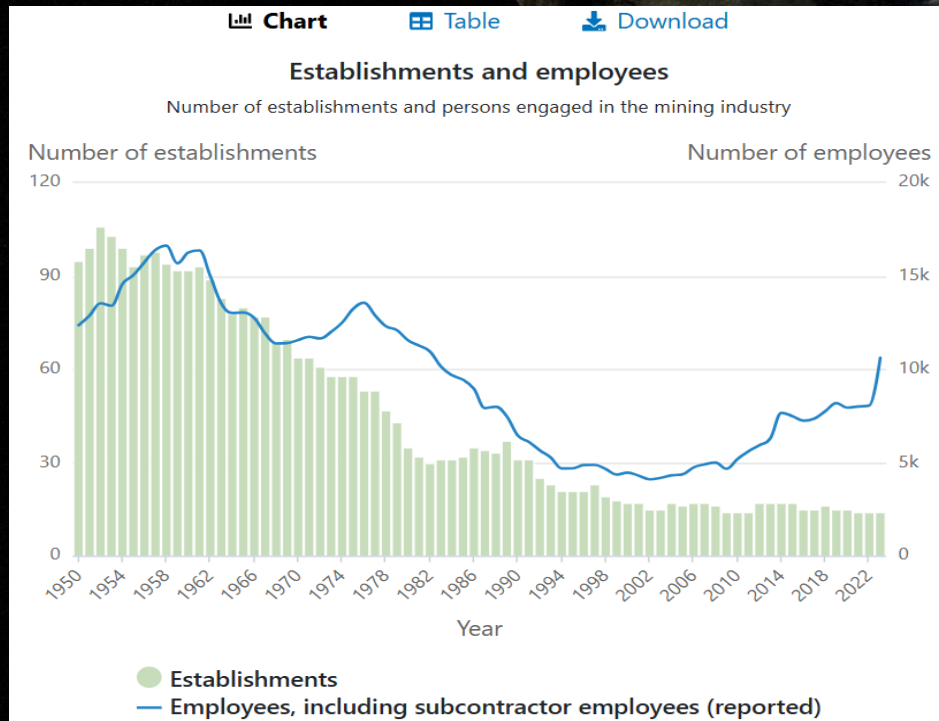
Bedrock geology, **geophysics**, **till geochemistry**

Budget >6 M€ 2026



SGU and Mineral resources

Produce and provide information for and **about** exploration and mining



SGU and Mineral resources

Provide advice for exploration companies

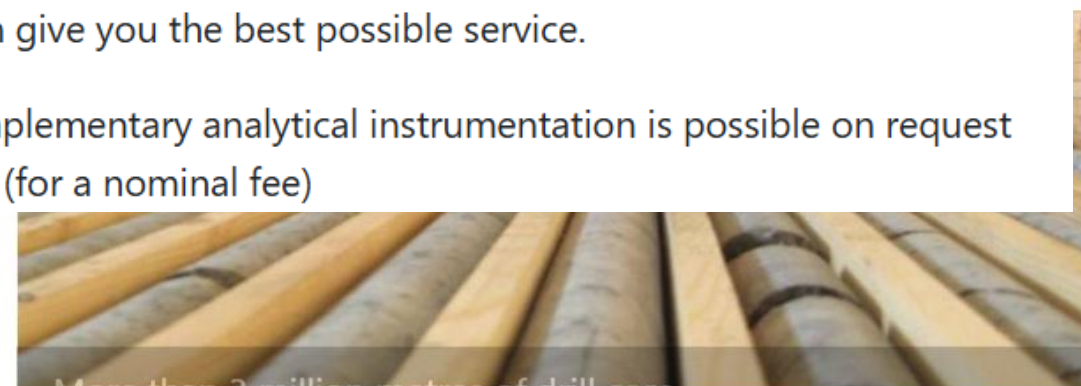
Service

The Staff at the Mineral Resources Information Office are on hand to answer questions related to mineral resources in Sweden, they can also assist in accessing information and materials from the archive. The staff have both geological and technical skills which give you the best possible service.

Potential use of complementary analytical instrumentation is possible on request with advance notice (for a nominal fee)



Mineral resources information office



Drill core collection

The Mineral Resources Information Office in Malå hosts SGU's national drill core collection with close to 4 million meters of drill cores from more than 22 000 boreholes from all over Sweden. The collection is one of the largest in the world.

SGU and Mineral resources

Marketing Sweden as a country with excellent potential for mining (and exploration)



4

Fraser Institute Annual Survey of Mining Companies, 2025

The top

Nevada ranked first this year with the highest PPI score of 100 moving up from the 4th place in last year's report. Botswana took the second spot in 2025, moving up from the 14th place in the 2024 report. Along with Nevada and Botswana, the top 10 ranked jurisdictions are Alberta, Saudi Arabia, Ontario, Finland, Newfoundland & Labrador, Saskatchewan, Sweden, and Arizona.

Canada has the most jurisdictions (4) in the top 10 followed by the United States (2), Europe (2), Africa (1) and Asia (1).

everyone at PDAC 2026 and invite
webinar on exploration in Sweden
urvey of Sweden (SGU) warmly thanks everyone
ooth at the PDAC Convention.

SGU and Mineral resources

Provide information to our government

Example: "Interview Study – Regulatory Simplification and Perceived Barriers to Establishment in the Mineral Industry"



Intervjustudie – Regelförenkling och upplevda hinder kring etablering inom mineralnäringen

SGU and Mineral resources

Active participation in media

E.g. addressing the conflict areas regarding exploration, mining, and other interests

Mineraljakten i Jämtlands län

Därför vill SGU inte ha veto för alunskiffer

29 mars 2026 06:00

Särlagstiftning för alunskiffer bör inte införas. Myndigheten SGU menar att det skulle hämma viktig kunskapsutveckling.
– Ska man ens kunna bedöma om en process kan fungera måste man kunna göra undersökningar, säger Kaj Lax på SGU.



Peder Edvinsson

Text



I en debattartikel i [Svenska Dagbladet](#) skrev elva politiker från Jämtland om fortsatt oro kring gruvplanerna i länet. Särskilt tryckte de på att ett veto kring brytning i alunskiffer måste till innan enskilda kommuners möjlighet att lägga veto

SGU and Mineral resources

Areas of national interest

Mineral deposits of national interest

Areas of particularly valuable mineral substances may be declared national interests by SGU. The provisions on national interests are found in the Swedish Environmental Code.

Chapter 3, Section 7, second paragraph of the Swedish Environmental Code states that areas containing deposits of valuable substances or materials that are of national interest shall be protected against measures that may be prejudicial to their extraction. Within such areas, municipalities and central government agencies may not plan for or authorise activities that might prevent or be prejudicial to the exploitation of mineral resources.

Factors that SGU takes into account when setting demarcations are:

- the deposit's significance to the country's supply capacity
- how well documented the deposit is
- the deposit's special material properties
- if the deposit constitutes a unique natural asset.

SGU and Mineral resources

Areas of national interest



2010-12-21

6(7)

omfattar Natura 2000-området och naturreservatet Andersby ängsbackar, beläget öster om Dannemorasjön.

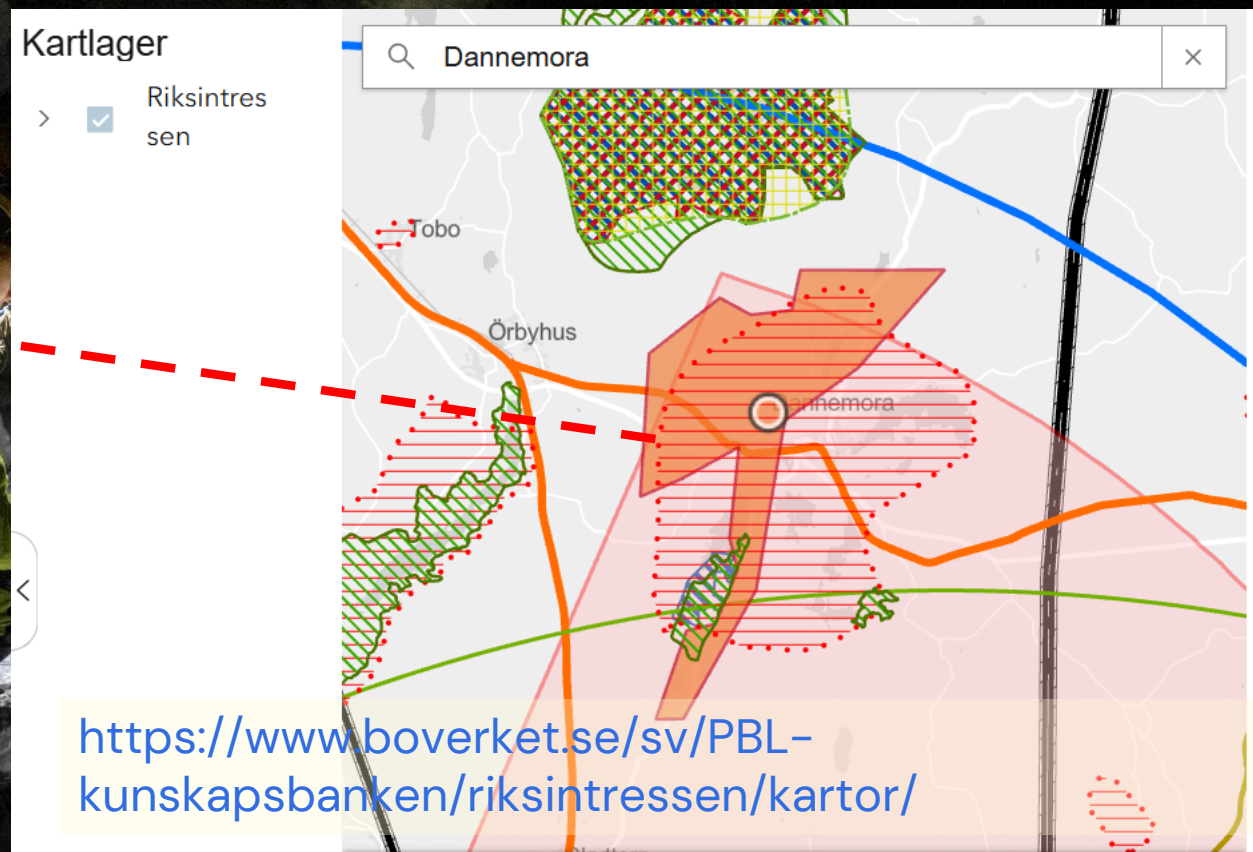


Figur 1. Gult=metavulkanit, blått=karbonatsten, grönt=metabasit, brunt=metagranit och rött/orange=granit.

Information från tidigare gruvverksamhet och uppgifter i SGU:s fyndighetsdatabas visar att potentialen för nya gruvor är mycket stor med hänsyn till geologiska förhållanden och utförd prospektering.

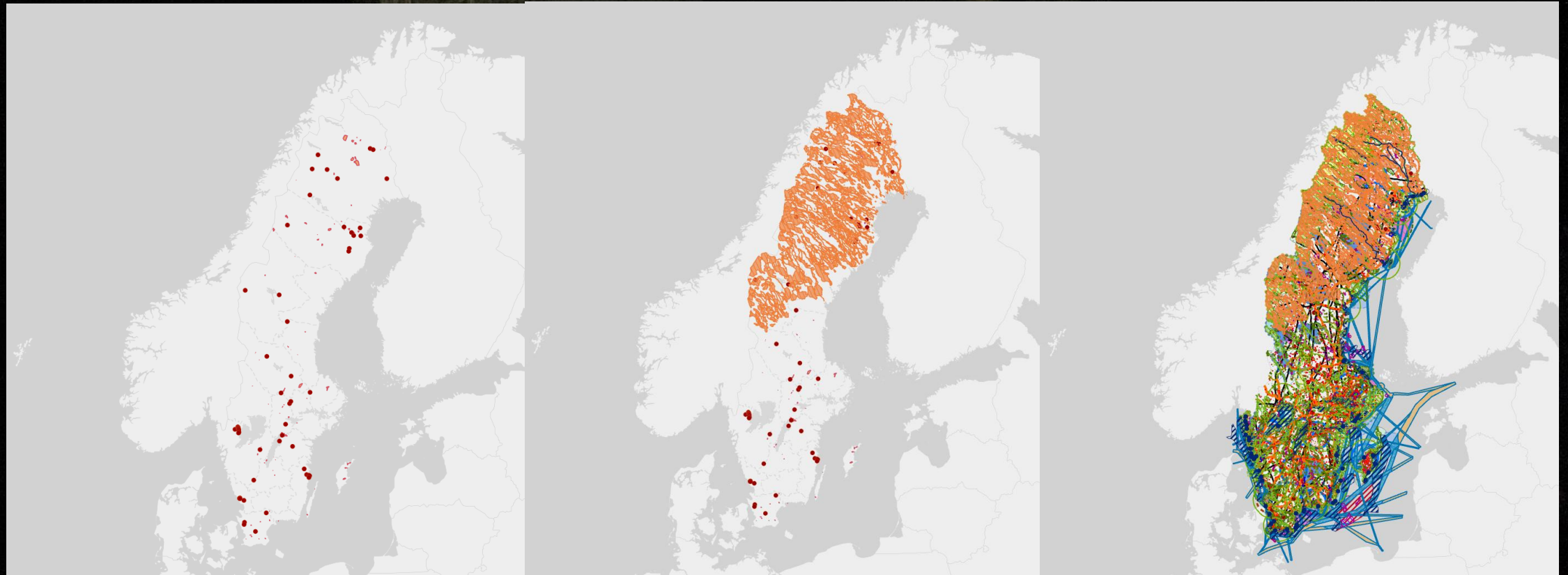
SGU and Mineral resources

Areas of national interest



SGU and Mineral resources

Areas of national interest



SGU and Mineral resources

Concluding remarks

- Strong support from the government
- Increased budget
- Several new tasks (e.g. preparedness)
- Historic good cooperation with GTK & NGU continuing and likely to grow even further